

SAWHNEY BSP989.2 (BSP989SD & BSP989SD-1)

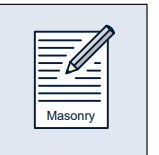
86.62m² / 932ft²

CONTRACT PACK COMPLIANT - RENTED & SHARED OWNERSHIP

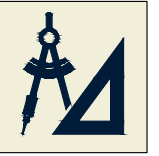
HQI UNIT TYPE: 3B4P HQI 5: 41% HQI 6: 54% HQI 7: 64%



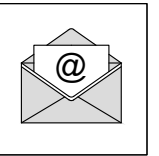
How To...



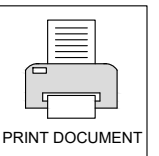
Construction Specification



Standard Details



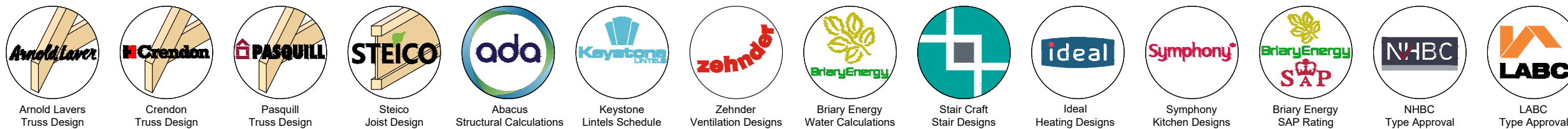
Feedback Email



PRINT DOCUMENT

	REV	DATE	DRAWN	CHECKED	DESCRIPTION
00 DRAWING REFERENCE SHEET	4.4	AUG 2022	CS	CS	DRAWING UPDATED IN LINE WITH LATEST ISSUE 4.4 NSS.3B4P
01 SETTING OUT PLAN (SUSPENDED SLAB)	4.4	AUG 2022	CS	CS	DRAWING UPDATED IN LINE WITH LATEST ISSUE 4.4 NSS.3B4P
01.1 SETTING OUT PLAN (BEAM AND BLOCK)	4.4	AUG 2022	CS	CS	DRAWING UPDATED IN LINE WITH LATEST ISSUE 4.4 NSS.3B4P
02 GROUND FLOOR PLAN	4.4	AUG 2022	CS	CS	DRAWING UPDATED IN LINE WITH LATEST ISSUE 4.4 NSS.3B4P
03 FIRST FLOOR PLAN	4.4	AUG 2022	CS	CS	DRAWING UPDATED IN LINE WITH LATEST ISSUE 4.4 NSS.3B4P
04 NATIONAL SPACE STANDARDS LAYOUT	4.4	AUG 2022	CS	CS	DRAWING UPDATED IN LINE WITH LATEST ISSUE 4.4 NSS.3B4P
05 PART M(4) CATEGORY 2 COMPLIANCE PLAN	4.4	AUG 2022	CS	CS	DRAWING UPDATED IN LINE WITH LATEST ISSUE 4.4 NSS.3B4P
06 BRICK ELEVATIONS	4.4	AUG 2022	CS	CS	DRAWING UPDATED IN LINE WITH LATEST ISSUE 4.4 NSS.3B4P
07 SECTION A-A & B-B	4.4	AUG 2022	CS	CS	DRAWING UPDATED IN LINE WITH LATEST ISSUE 4.4 NSS.3B4P
08 JOIST SETTING OUT	4.4	AUG 2022	CS	CS	DRAWING UPDATED IN LINE WITH LATEST ISSUE 4.4 NSS.3B4P
09 TRUSS SETTING OUT	4.4	AUG 2022	CS	CS	DRAWING UPDATED IN LINE WITH LATEST ISSUE 4.4 NSS.3B4P
10 GROUND FLOOR ELECTRICAL LAYOUT	4.4	AUG 2022	CS	CS	DRAWING UPDATED IN LINE WITH LATEST ISSUE 4.4 NSS.3B4P
11 FIRST FLOOR ELECTRICAL LAYOUT	4.4	AUG 2022	CS	CS	DRAWING UPDATED IN LINE WITH LATEST ISSUE 4.4 NSS.3B4P
12 KITCHEN ELECTRICAL	4.4	AUG 2022	CS	CS	DRAWING UPDATED IN LINE WITH LATEST ISSUE 4.4 NSS.3B4P
13 BATHROOM LAYOUT	4.4	AUG 2022	CS	CS	DRAWING UPDATED IN LINE WITH LATEST ISSUE 4.4 NSS.3B4P
14 ROOM SIZE LAYOUT	4.4	AUG 2022	CS	CS	DRAWING UPDATED IN LINE WITH LATEST ISSUE 4.4 NSS.3B4P

**LEVEL: BASE
ISSUE 4.4**



THIS DRAWING AND THE BUILDING WORKS DEPICTED ARE THE COPYRIGHT OF J.S.BLOOR (SERVICES) LIMITED AND MAY NOT BE REPRODUCED OR AMENDED EXCEPT BY WRITTEN PERMISSION.

SAWHNEY BSP989.2 (BSP989SD & BSP989SD-1)

86.62m² / 932ft²



LEGEND

-  EXTERNAL OUTER LEAF 102mm / 100mm
INDICATES BRICK / BLOCK (WHEN RENDER) / STONE CONSTRUCTION TO MATERIAL / PLOT SCHEDULE AND GROUP SPECIFICATION.
-  INTERNAL CAVITY BLOCKWORK 100mm
TO BE CONSTRUCTED USING 100mm DUROX SUPABLOC BLOCKWORK (3.6N/mm²) TO GROUP SPECIFICATION.
-  INTERNAL CAVITY BLOCKWORK 100mm
TO BE CONSTRUCTED USING 100mm DUROX SUPABLOC 7 BLOCKWORK (7.3N/mm²) TO GROUP SPECIFICATION.
-  INTERNAL BLOCKWORK WALLS 100mm
LOAD BEARING / NON LOAD BEARING WALLS TO BE CONSTRUCTED USING 100mm LIGHTWEIGHT AGGREGATE BLOCKS (3.6N/mm²) (DRY DENSITY 1350 to 1600kg/m³)
-  INTERNAL BLOCKWORK WALLS 100mm
LOAD BEARING / NON LOAD BEARING WALLS TO BE CONSTRUCTED USING 100mm LIGHTWEIGHT AGGREGATE BLOCKS (7.3N/mm²) (DRY DENSITY 1350 to 1600kg/m³)
-  EXTERNAL BLOCKWORK WALLS 100mm
100mm LIGHTWEIGHT AGGREGATE BLOCK (7.3N/mm²) (DRY DENSITY 1350 to 1600kg/m³) OUTER LEAF TO RECEIVE SPECIALIST ROUGHCAST MONOCOUCHE RENDER. SEE DETAIL ET804.1 AND weberpral M APPLICATION GUIDE. REFER TO MATERIAL SCHEDULE FOR TYPE AND COLOUR. FOR RENDER STOP SEE DETAIL ET801
-  SEMI-EXPOSED WALL TO BE 100mm
DUROX SUPABLOC BLOCKWORK (BETWEEN DWELLING AND GARAGE - 3.6N/mm² MIN) WITH 38mm BRITISH GYPSUM THERMALINE PIR PLASTERBOARD ON DABS TO DWELLING (WARM) SIDE TO GROUP SPECIFICATION.
-  NOTE : FOR INSULATION IN CAVITY WALLS REFER TO GROUP SPECIFICATION AND HOUSE TYPE SAP RATINGS.
-  EXTERNAL WALL INSULATION (BELOW DPC)
PROVIDE FULL FILL TO THE CAVITY USING KNAUFF SUPAFIL 34 BLOWN FIBRE INJECTED INSULATION (WHITE) INSTALLED IN ACCORDANCE WITH THE MANUFACTURER'S INSTRUCTIONS.
-  EXTERNAL WALL INSULATION (ABOVE DPC)
PROVIDE FULL FILL TO THE CAVITY USING KNAUFF SUPAFIL 34 BLOWN FIBRE INJECTED INSULATION (WHITE) INSTALLED IN ACCORDANCE WITH THE MANUFACTURER'S INSTRUCTIONS.
-  PARTY WALL INSULATION
PROVIDE FULL FILL TO THE CAVITY USING KNAUFF SUPAFIL PARTY WALL BLOWN FIBRE INJECTED INSULATION (BLUE) INSTALLED IN ACCORDANCE WITH THE MANUFACTURER'S INSTRUCTIONS. WALLS TO BE CONSTRUCTED USING 100mm LIGHTWEIGHT AGGREGATE BLOCKS (3.6N/mm²) (DRY DENSITY 1350 to 1600kg/m³)
-  NON-LOADBEARING METAL STUD PARTITION
75mm NOMINAL FINISHED DIMENSION FOR STUD WALLS REFER TO GROUP SPECIFICATION.
-  NON-LOADBEARING METAL STUD PARTITION
WITH 50mm ISOVER APR 1200 INSULATION IN THE CAVITY TO ACHIEVE 40dB SOUND REDUCTION 75mm NOMINAL FINISHED DIMENSION FOR STUD WALLS REFER TO GROUP SPECIFICATION.
-  TIMBER STRUCTURAL STUD PARTITIONS
INTERNAL STRUCTURAL STUD PARTITIONS TO BE CONSTRUCTED USING MIN. 76 X 50mm (50 X 100mm STUD REGULARISED TO 76mm FINISHED) WITH 9.5mm PLYWOOD TO ONE SIDE. SEE DETAIL IW400.1
-  TIMBER STRUCTURAL STUD PARTITIONS (INSULATED)
INTERNAL STRUCTURAL STUD PARTITIONS TO BE CONSTRUCTED USING MIN. 76 X 50mm (50 X 100mm STUD REGULARISED TO 76mm FINISHED) WITH 9.5mm PLYWOOD TO ONE SIDE. 65mm ISOVER APR 1200 INSULATION OR EQUIVALENT IN THE STUD CAVITY. SEE DETAIL IW400.1


WINDOW SCHEDULE

BSP989SD

NO TRICKLEVENTS WHERE DESIGN AIR LEAKAGE IS ABOVE 5 **
BLACK FRAMES WITH WHITE CASEMENTS TO FRONT ELEVATION
OF RENDERED PLOTS ONLY - REFER TO MANUFACTURERS SPECIFICATION.

WINDOW NO.	WINDOW SIZE & NO.	WINDOW STYLE.
Q W1	1200 x 1350	LEADED
Q W2	1200 x 1050	PLAIN
Q EC FE W3	670 x 1200	LEADED
FE W4	1200 x 1200	LEADED
FE W5	1770 x 1200	PLAIN
OB W6 (TOP HUNG)	630 x 1050	PLAIN

DOOR NO.	DOOR SIZE.	DOOR STYLE.
Q D1	1001 x 2100	DS4
Q D2	932 x 2100	-

 DENOTES TOUGHENED SAFETY GLASS TO B.S. 6206 (SEE DETAIL NO: **WD702**)

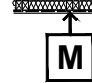
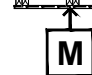
EC DENOTES WINDOWS SUPPLIED WITH EASY CLEAN HINGES

OB DENOTES OBSCURE GLASS

FE DENOTES WINDOWS TO BE SUPPLIED AS FIRE ESCAPE.
REFER TO CONSTRUCTION SPECIFICATION. SECTION 17. MEANS OF ESCAPE.

Q WINDOWS & DOORS TO BE PART Q COMPLIANT WHERE APPLICABLE. SEE DETAIL **WD703**.

RENTED & SHARED LEVEL 1 UPLIFT - CHILDPROOF
RELEASABLE WINDOW RESTRICTORS TO ALL WINDOWS

-  PART M4 TIMBER STUD PARTITIONS (INSULATED)
FOR BATHROOMS AND WC'S. INTERNAL STUD PARTITIONS TO BE CONSTRUCTED USING MIN. DOUBLED UP 75 X 50mm VERTICAL STUDS WITH 12mm PLYWOOD TO ONE SIDE. 65mm ISOVER APR 1200 INSULATION OR EQUIVALENT IN THE STUD CAVITY. SEE DETAIL **IW400.3**
-  PART M4 TIMBER STUD PARTITIONS
FOR BATHROOMS AND WC'S. INTERNAL STUD PARTITIONS TO BE CONSTRUCTED USING MIN. DOUBLED UP 75 X 50mm VERTICAL STUDS WITH 12mm PLYWOOD TO ONE SIDE. SEE DETAIL **IW400.3**

EXTRACT VENTILATION RATES

SYSTEM 1 BACKGROUND VENTILATION AND INTERMITTENT FANS

REQUIRED BACKGROUND VENTILATION		40000mm ²
	Equivalent Ventilation Area (mm ²) (>5m ² /h.m ²) at 50Pa	
TOTAL FLOOR AREAS	86.62m ²	40000
No. OF BEDROOMS	3	
No. OF ADDITIONAL DOUBLE BED'S	0	0
SINGLE (S) OR MULTI (M) STOREY'S	M	0
SINGLE FACADE	No.	0
TOTAL		40000mm²

IN ACCORDANCE WITH TABLE 5.2A (SYSTEM 1 BACKGROUND VENTILATORS AND INTERMITTENT FANS), APPROVED DOCUMENT PART F, F1, SECTION 1.

PROPOSED BACKGROUND VENTILATION	
No. OF OPENINGS (WITH VENTS)	4
TRICKLE VENTS REQUIRED	8
EQUIVALENT AREA OF EACH VENT	5000mm ²
TOTAL	

INDIVIDUAL FAN EXTRACTION RATES			
FAN LOCATION	LOCATION	OPENABLE WINDOW	REQUIRED EXTRACT RATE
KITCHEN	CEILING	YES	60 l/s
WC	CEILING	NO	6 l/s
BATHROOM	CEILING	YES	15 l/s

NOTE* - IN ACCORDANCE WITH TABLE 1.1A, APPROVED DOCUMENT PART F, F1, SECTION 1.
NOTE** - IN ACCORDANCE WITH MANUFACTURERS TECHNICAL AIRFLOW PERFORMANCE DATA.

THIS VENTILATION INSTALLATION (SYSTEM 1) IS REQUIRED TO BE COMMISSIONED AS PER THE VENTILATION COMPLIANCE GUIDE AND COMMISSIONING CERTIFICATE SUBMITTED.

BACKGROUND VENTILATION MUST BE PROVIDED VIA TRICKLE VENTILATORS. THERE MUST BE A MINIMUM OF 5000mm² PER HABITABLE ROOM AND MINIMUM 2500mm² PER WET ROOM (SEE TABLE 5.2a SYSTEM 1 - BACKGROUND VENTILATORS AND INTERMITTENT EXTRACT FANS FROM APPROVED DOCUMENT F) 1 NO. 5000mm² TRICKLE VENTS WILL BE REQUIRED TO BE FITTED PER WINDOW PER HABITABLE ROOM.

AIR TRANSFER - TO ENSURE GOOD TRANSFER OF AIR THROUGHOUT THE DWELLING A 20MM UNDERCUT ABOVE UN-FINISHED FLOOR LEVEL IS REQUIRED ON ALL INTERNAL DOORS.

STOP THINK!



RISK OF FALLING

PROVIDE SUITABLE WORKING PLATFORM + / OR FALL PROTECTION MEASURES (RELEVANT TO THE TECHNIQUE USED FOR INSTALLATION E.G. IF INSTALLED FROM THE FLOOR OR FROM THE SCAFFOLD WORKING PLATFORM.



HEAVY OBJECT

RISK ASSESSMENT FOR MANUAL HANDLING TO BE CARRIED OUT BASED ON THE TOTAL WEIGHT OF MATERIALS USED AND IF NECESSARY THE USE OF MECHANICAL MEANS FOR MOVEMENT + PLACING ON SITE, WHERE APPROPRIATE.



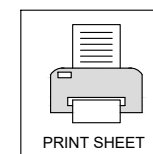
FRAGILE CEILING

A RISK ASSESSMENT MUST BE CARRIED OUT PRIOR TO ANY WORK COMMENCING WITHIN LOFT SPACE.



HEAVY DOOR / WINDOW COMBINATION FRAME

GLASS TO BE REMOVED FROM COMBINED DOOR / WINDOW FRAME PRIOR TO INSTALLATION.



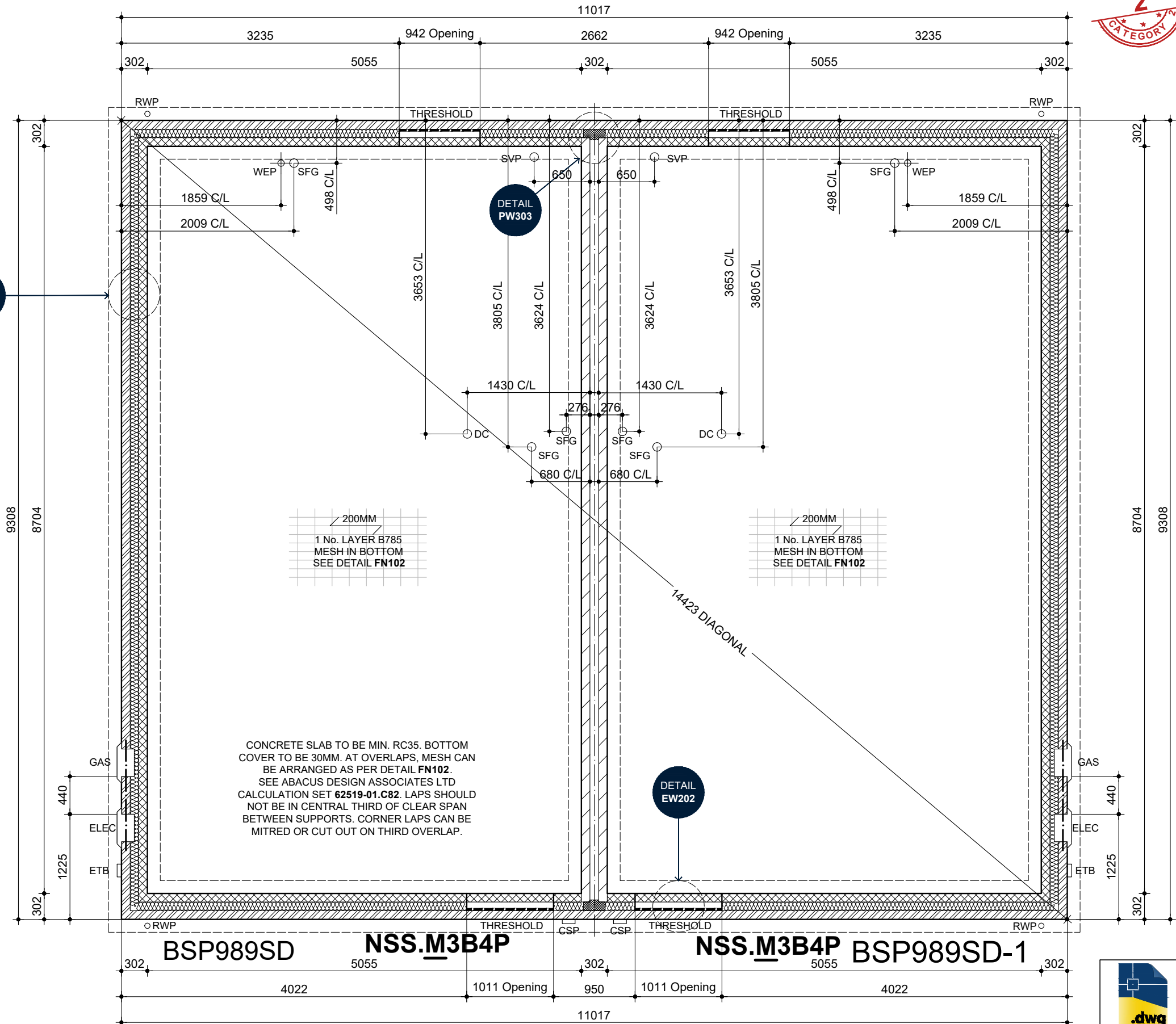
PRINT SHEET

ISSUE 4.4

BLOOR HOMES

KEY

RWP	RAINWATER DOWN PIPES ARE SHOWN INDICATIVE REFER TO THE ENGINEERS DRAWING FOR EXACT LOCATION.
DC	DIRECT CONNECTION
SFG	SEALED FLOOR GULLY
SVP	SOIL VENT PIPE
WEP	WATER ENTRY POINT
ETB	EXTERNAL TERMINATION BOX SEE DETAILS IS905.1 & IS905.2
CSP	CUSTOMER SPLICE POINT BOX SEE DETAILS IS904.1 & IS904.2
ELEC	ELECTRIC METER BOX WITH CAVITY TRAY, WEEPHOLES AND KEYSTONE ANG/K 750 LINTEL OVER. SEE DETAIL IS914
GAS	GAS METER BOX WITH CAVITY TRAY, WEEPHOLES AND KEYSTONE ANG/K 750 LINTEL OVER. SEE DETAIL IS914
	DENOTES CAVITY TO BE FULLY FILLED WITH BLOWN FIBRE MINERAL WOOL OR PARTIAL FILL INSULATION. REFER TO SPECIFICATION FOR TYPE.
	B785 MESH DIRECTION, MAIN BAR FACING DOWN TO RUN PARALLEL WITH THE SPAN. MIN 100mm BEARING ONTO SLEEPER WALLS WITH A MIN OF 350mm OVERLAP AT JOINTS.
	DENOTES 25mm POLYSTYRENE PERIMETER INSULATION BOARD TRAPPED BETWEEN CONCRETE SLAB & EDGE OF EXTERNAL BRICKWORK.



SETTING OUT PLAN (SUSPENDED SLAB)

DASHED LINES INDICATE FOUNDATION TO EXTERNAL & INTERNAL WALLS. REFER TO CONSULTING ENGINEERS DRAWING FOR ACTUAL SIZE & TYPE. REFER TO CONSTRUCTION SPECIFICATION AND HOUSE TYPE SPECIFIC SAP RATING FOR INSULATION TYPE AND THICKNESS.



AUG 2022

4.4

REV:

DRAWING UPDATED IN LINE WITH LATEST ISSUE 4.4 NSS.3B4P

BLOOR HOMES

DRG NO.: **BSP989.2_01**

SCALE: **1:50 @ A3**

DATE: **JAN 2020**

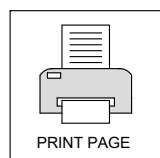
DRAWN: **TBW/APO**

CHECKED: **GMA/PO**

NAME: **SAWHNEY**

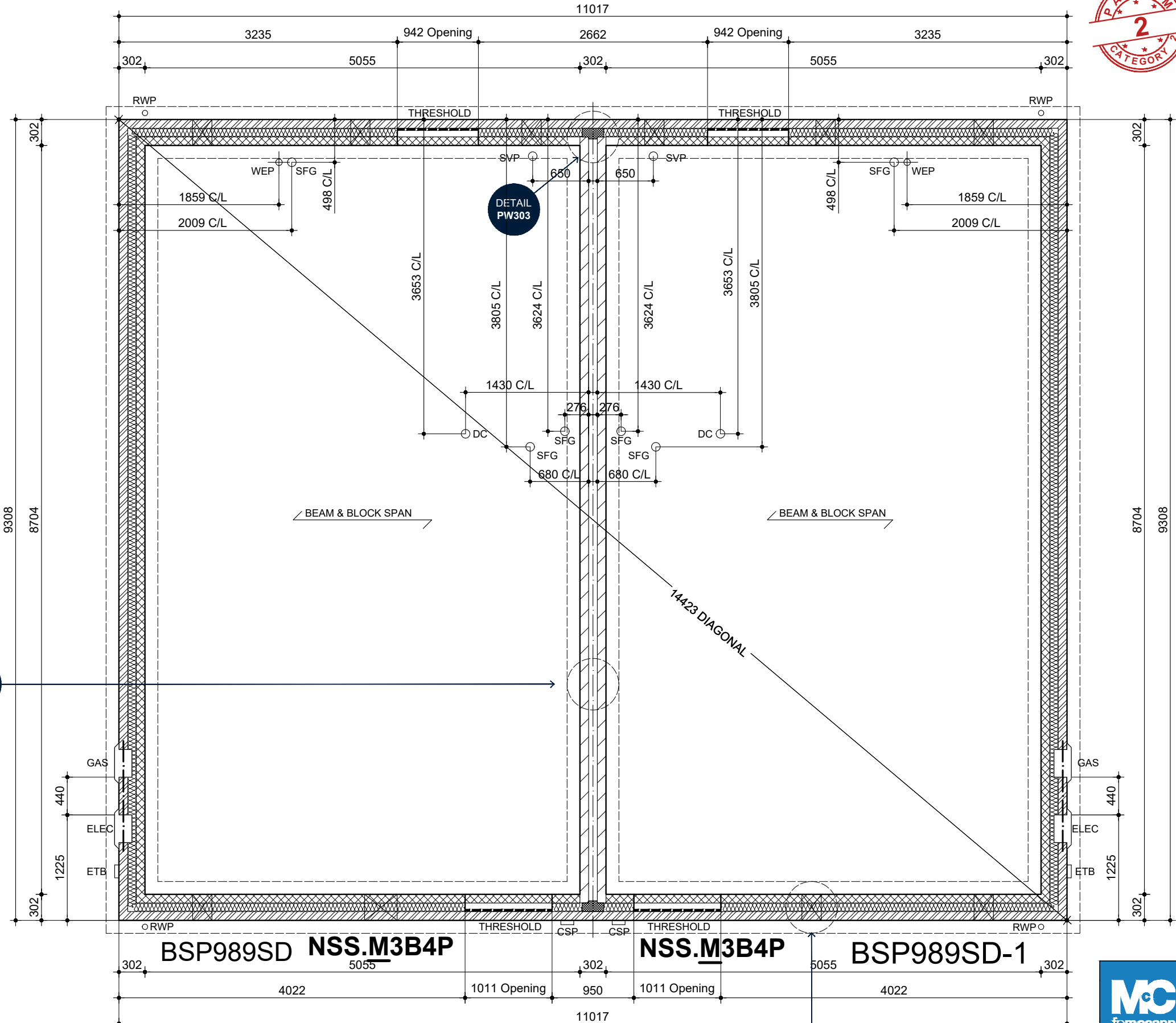
DRAWING: **SETTING OUT PLAN (SUSPENDED SLAB)**

SPECIFICATION LEVEL: **BASE**



KEY

RWP ○	RAINWATER DOWN PIPES ARE SHOWN INDICATIVE REFER TO THE ENGINEERS DRAWING FOR EXACT LOCATION.
DC ○	DIRECT CONNECTION
SFG ○	SEALED FLOOR GULLY
SVP ○	SOIL VENT PIPE
WEP ⊕	WATER ENTRY POINT
ETB □	EXTERNAL TERMINATION BOX SEE DETAILS IS905.1 & IS905.2
CSP □	CUSTOMER SPLICE POINT BOX SEE DETAILS IS904.1 & IS904.2
ELEC □	ELECTRIC METER BOX WITH CAVITY TRAY, WEEPHOLES AND KEYSTONE ANG/K 750 LINTEL OVER. SEE DETAIL IS914
GAS □	GAS METER BOX WITH CAVITY TRAY, WEEPHOLES AND KEYSTONE ANG/K 750 LINTEL OVER. SEE DETAIL IS914
	DENOTES CAVITY TO BE FULLY FILLED WITH BLOWN FIBRE MINERAL WOOL OR PARTIAL FILL INSULATION. REFER TO SPECIFICATION FOR TYPE.
	DENOTES 25mm POLYSTYRENE PERIMETER INSULATION BOARD TRAPPED BETWEEN CONCRETE SLAB & EDGE OF EXTERNAL BRICKWORK.
	SLEEPER WALLS TO SUPPORT IN-SITU SUSPENDED SLAB
	DENOTES LOCATION OF TELESCOPIC UNDERFLOOR AIR VENTILATORS/AIR BRICKS WITH CAVITY TRAY OVER AT MAX 2000MM C/CS & 450mm FROM CORNERS TO EXTERNAL WALLS.
	DENOTES LOCATION OF UNDERFLOOR AIR BRICKS AT MAX 2000mm C/CS TO INTERNAL SLEEPER WALLS



REV: **4.4** AUG 2022

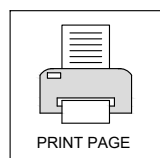
DRAWING UPDATED IN LINE WITH LATEST ISSUE 4.4 NSS.3B4P

BLOOR HOMES

DRG NO: **BSP989.2_01.1**
 SCALE: **1:50 @ A3**
 DATE: **JAN 2020**
 DRAWN: **TBW/APO**
 CHECKED: **GMA/PO**

NAME: **SAWHNEY**

DRAWING: **SETTING OUT PLAN (BEAM & BLOCK)**
 SPECIFICATION LEVEL: **BASE**



SETTING OUT PLAN (BEAM & BLOCK)
 DASHED LINES INDICATE FOUNDATION TO EXTERNAL & INTERNAL WALLS. REFER TO CONSULTING ENGINEERS DRAWING FOR ACTUAL SIZE & TYPE. REFER TO CONSTRUCTION SPECIFICATION AND HOUSE TYPE SPECIFIC SAP RATING FOR INSULATION TYPE AND THICKNESS.

STORAGE REQUIREMENTS

TO TALL STORAGE IN KITCHEN	TALL STORAGE = 0.36m ²
TO STORE IN THE BATHROOM	5 No. GENERAL STORAGE SHELVES 0.992m ² x 0.50m ² = 2.05m ² HEAT SOURCE & 2 SLATTED SHELVES A/C 0.70m x 0.78m = 1.29m ² TALL STORAGE SPACE = 0.50m ²
AC BULKHEAD	
TO STORE IN THE STORE BENEATH STAIRS	

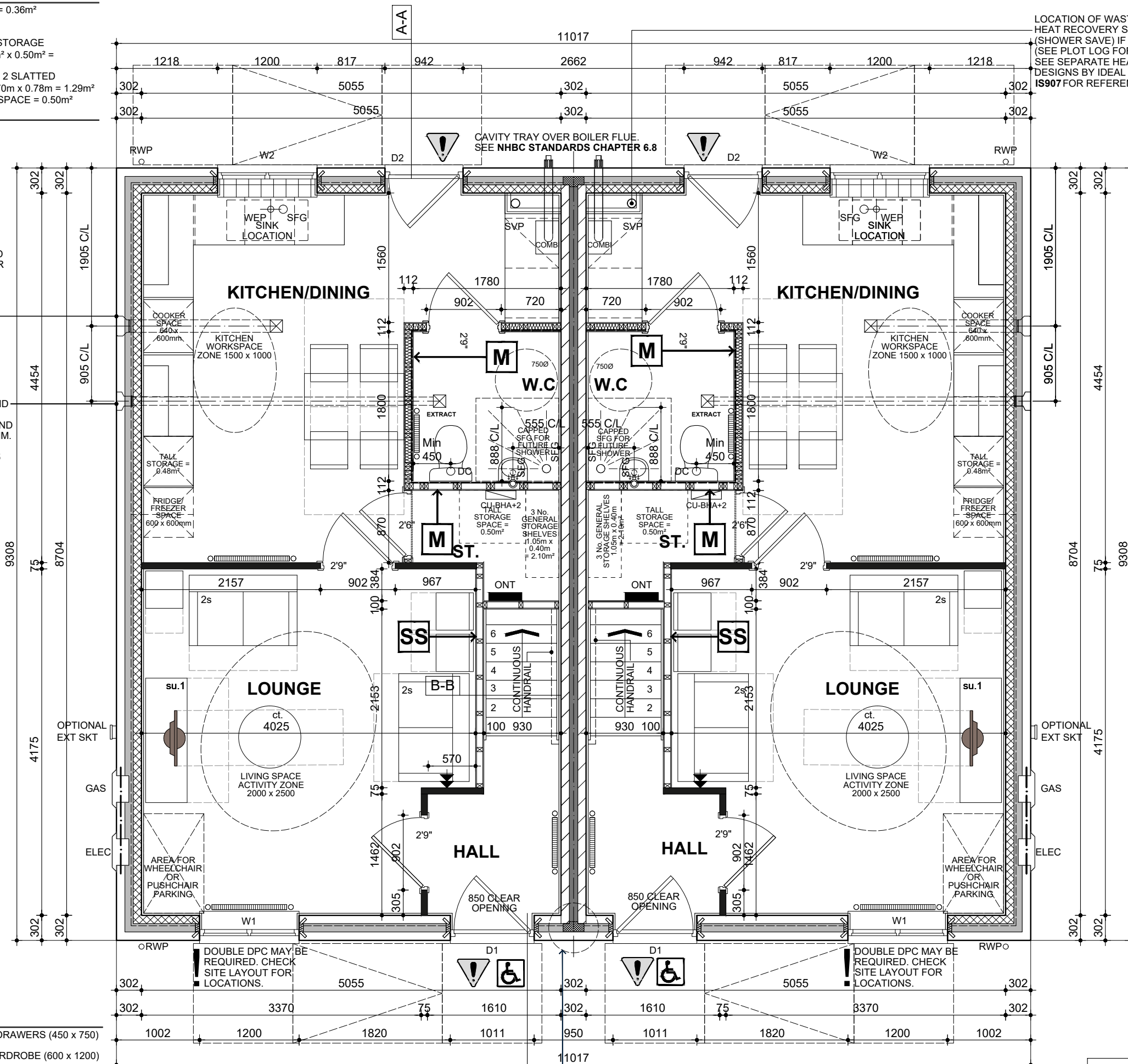
ADAPT-AIR DOUBLE AIR BRICK AND ADAPTOR (6550+air brick colour) FOR 150MM DUCTING WITH CAVITY TRAY OVER TO EXTEND EITHER SIDE OF AIR BRICK BY 150MM. SEE MANUFACTURERS PRODUCT INFORMATION 6650

MANTHORPE BUILDING PRODUCTS COMBINATION AIR BRICK (G930) AND REMOTE VOID VENTILATOR (G962) WITH CAVITY TRAY OVER TO EXTEND EITHER SIDE OF AIR BRICK BY 150MM. SEE MANUFACTURERS PRODUCT INFORMATION MBP8194b_MBP8195



FURNITURE LEGEND

vc = VISITOR CHAIR (450 x 450)	cod = CHEST OF DRAWERS (450 x 750)
3s = 2 SEAT SOFA (850 x 1850)	dw = DOUBLE WARDROBE (600 x 1200)
ct = COFFEE TABLE (750Ø)	bsc = BED SIDE CABINET (400 x 400)
su.1 = STORAGE UNIT (500 x 1500)	db = DOUBLE BED (2000 x 1500)
dt.5 = DINING TABLE 1 (800 x 1350)	t&c = TABLE AND CHAIR (500 x 1050)
ac. = ARM CHAIR (850 x 850)	



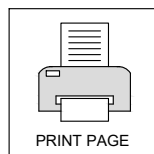
BSP989SD NSS.M3B4P GROUND FLOOR PLAN

FOR CAVITY WALL CONSTRUCTION REFER TO DETAIL EW200.1 FOR BRICK. EW200.3 FOR STONE



NSS.M3B4P

BSP989SD-1



- STRUCTURAL TIMBER STUD PARTITION
- 7N BLOCKWORK
- TOUGHENED SAFETY GLASS TO DOORS & WINDOWS
- PART M ACCESS TO FRONT DOOR
- CEILING MOUNTED EXTRACTOR FAN
- CEILING MOUNTED EXTRACTOR FAN TO AIRBRICK
- WALL MOUNTED EXTRACTOR FAN
- INTEGRAL GARAGE 3MIN SELF CLOSING FIRE RESISTANT DOOR
- 2.5 STOREY 30 MIN FIRE RESISTANT DOOR
- BOILER. SEE HEATING DESIGN FOR MODEL & ASSOCIATED EQUIPMENT.
- TOWEL RADIATOR. (SEE SPECIFICATION FOR REQUIREMENT)
- RADIATOR
- THERMOSTAT

AUG 2022

REV: 4.4

DRAWING UPDATED IN LINE WITH LATEST ISSUE 4.4 NSS.3B4P

BLOOR HOMES

DRG NO.: BSP989.2_02

SCALE: 1:50 @ A3

DATE: JAN 2020

DRAWN: TBW/APO

CHECKED: GM/APO

NAME: SAWHNEY

DRAWING: GROUND FLOOR PLAN

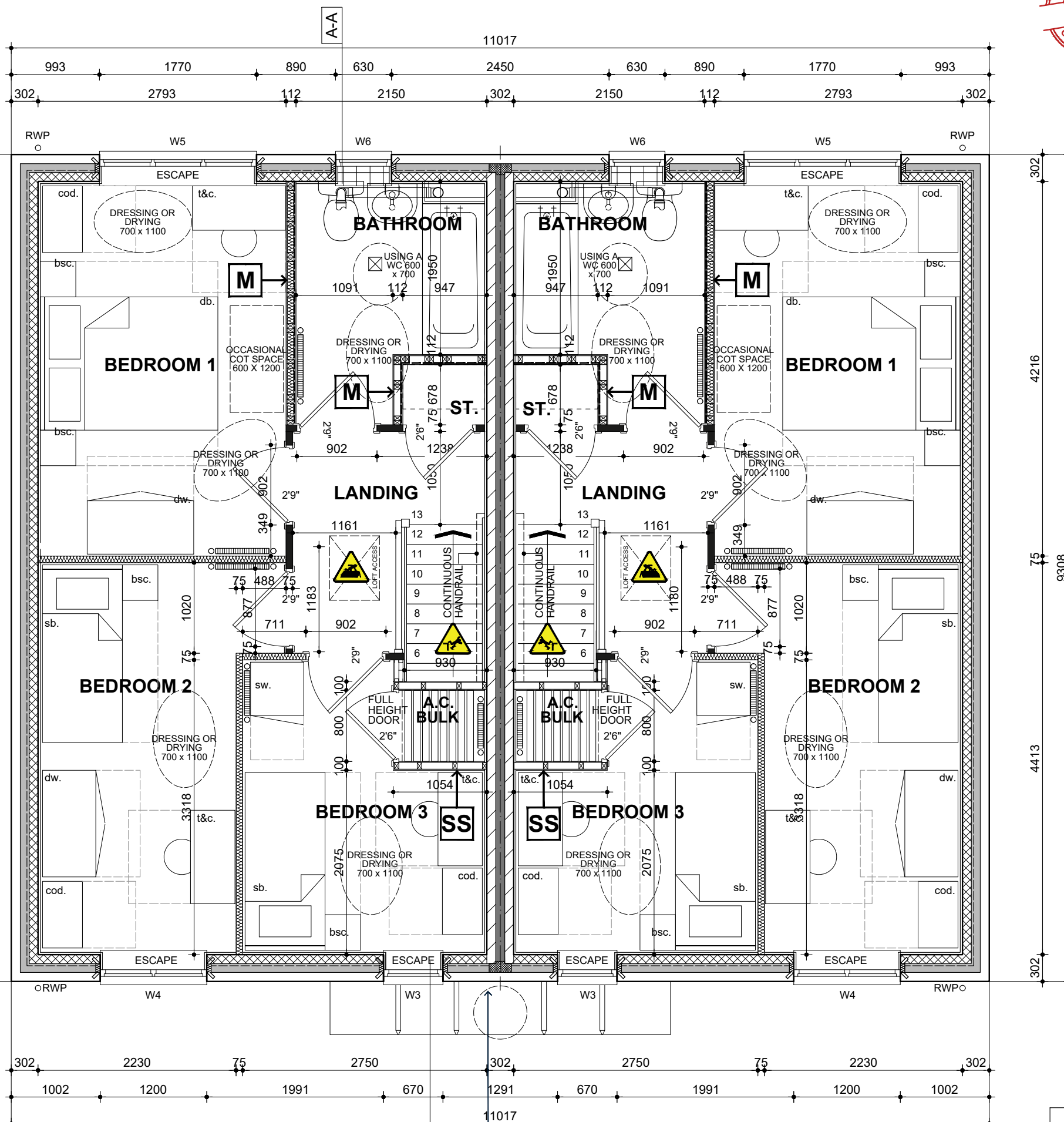
SPECIFICATION LEVEL: BASE

STORAGE REQUIREMENTS

TO TALL STORAGE IN KITCHEN	TALL STORAGE = 0.36m ²
TO STORE IN THE BATHROOM	5 No. GENERAL STORAGE SHELVES 0.992m ² x 0.50m ² = 2.05m ² HEAT SOURCE & 2 SLATTED SHELVES A/C 0.70m x 0.78m = 1.29m ² TALL STORAGE SPACE = 0.50m ²
AC BULKHEAD	
TO STORE IN THE STORE BENEATH STAIRS	

FURNITURE LEGEND

vc = VISITOR CHAIR (450 x 450)	cod = CHEST OF DRAWERS (450 x 750)
3s = 2 SEAT SOFA (850 x 1850)	dw = DOUBLE WARDROBE (600 x 1200)
ct = COFFEE TABLE (750Ø)	bsc = BED SIDE CABINET (400 x 400)
su.1 = STORAGE UNIT (500 x 1500)	db = DOUBLE BED (2000 x 1500)
dt.5 = DINING TABLE 1 (800 x 1350)	t&c = TABLE AND CHAIR (500 x 1050)
ac. = ARM CHAIR (850 x 850)	



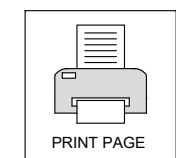
BSP989SD NSS.M3B4P **NSS.M3B4P** **BSP989SD-1**

FIRST FLOOR PLAN

FOR CAVITY WALL CONSTRUCTION REFER TO DETAIL **EW200.1** FOR BRICK. **EW200.3** FOR STONE



- STRUCTURAL TIMBER STUD PARTITION
- 7N BLOCKWORK
- TOUGHENED SAFETY GLASS TO DOORS & WINDOWS
- PART M ACCESS TO FRONT DOOR
- CEILING MOUNTED EXTRACTOR FAN
- WALL MOUNTED EXTRACTOR FAN TO AIRBRICK
- INTEGRAL GARAGE 3MIN SELF CLOSING FIRE RESISTANT DOOR
- 2.5 STOREY 30 MIN FIRE RESISTANT DOOR
- BOILER SEE HEATING DESIGN FOR MODEL & ASSOCIATED EQUIPMENT
- TOWEL RADIATOR (SEE SPECIFICATION FOR REQUIREMENT)
- RADIATOR
- THERMOSTAT



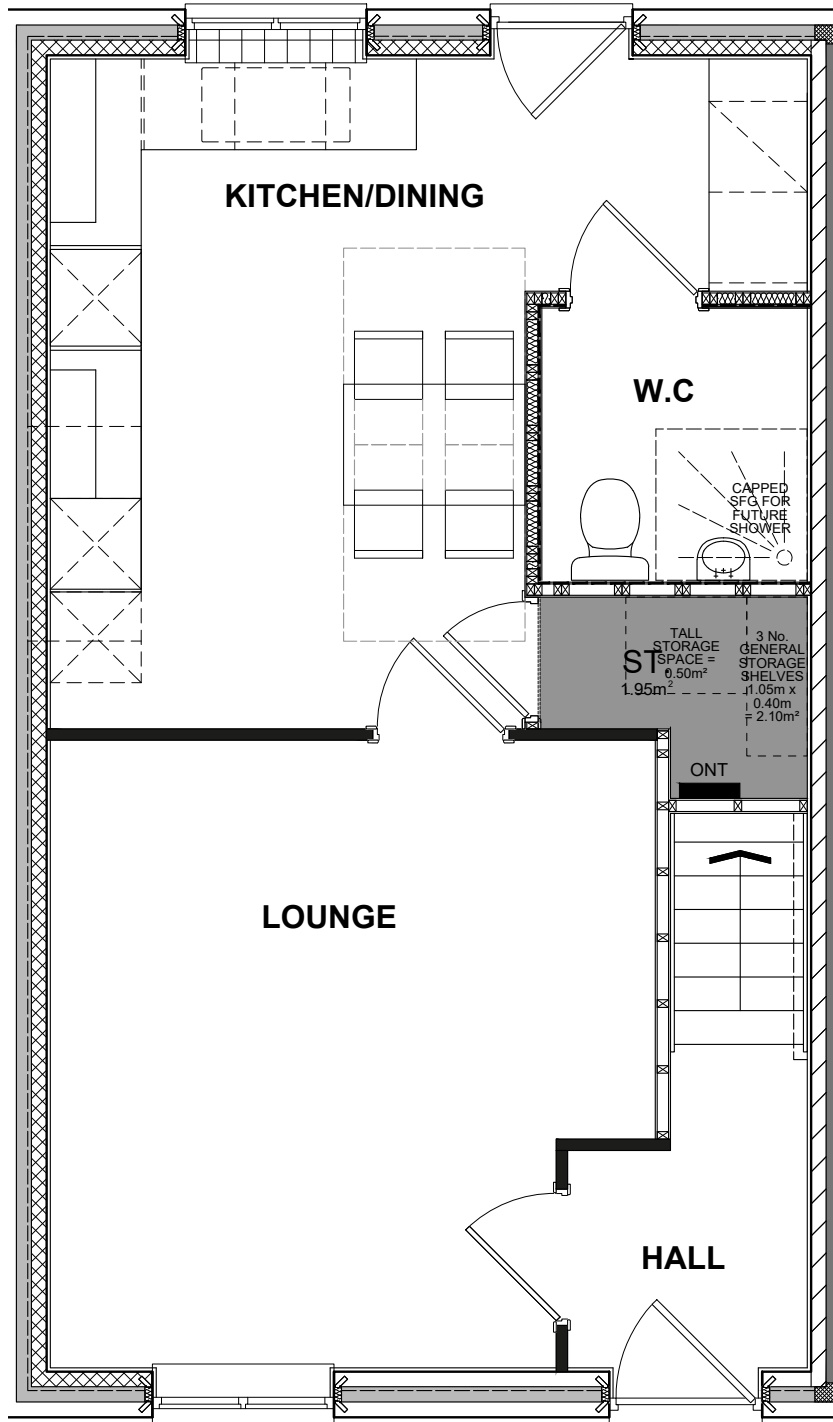
REV: **4.4** AUG 2022

DRAWING UPDATED IN LINE WITH LATEST ISSUE 4.4 NSS.3B4P

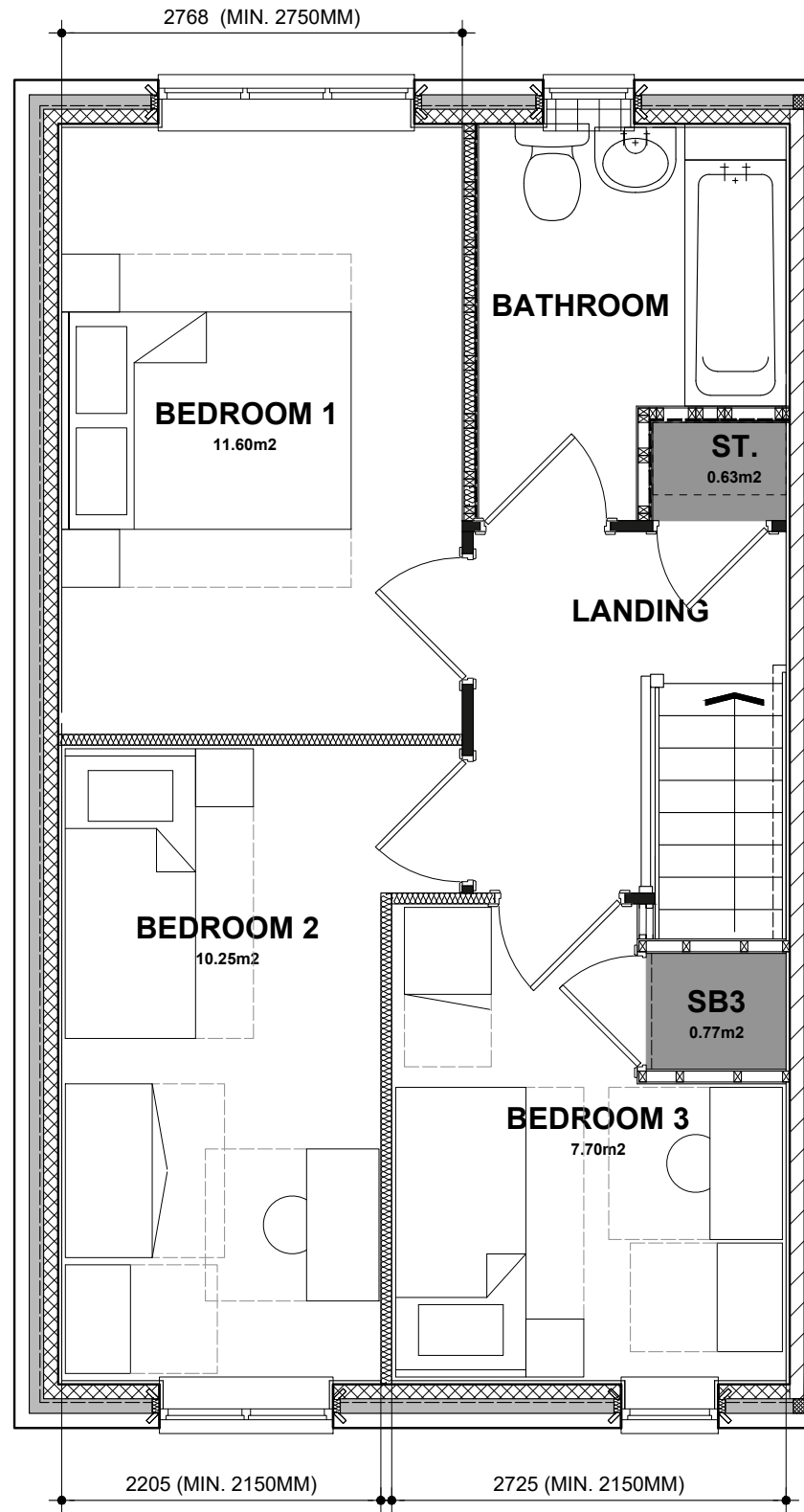


DRG NO.: **BSP989.2_03**
 SCALE: **1:50 @ A3**
 DATE: **JAN 2020**
 DRAWN: **TBW/APO**
 CHECKED: **GMA/PO**

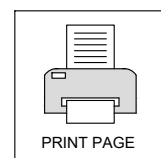
NAME: **SAWHNEY**
 DRAWING: **FIRST FLOOR PLAN**
 SPECIFICATION LEVEL: **BASE**



GROUND FLOOR PLAN



FIRST FLOOR PLAN



NATIONAL SPACE STANDARDS COMPLIANCE

3B4P	AREA	NSS REQ'	AREA	NSS REQ'	AREA	NSS REQ'
GROUND FLOOR PLAN	43.31m²		BEDROOM 1	11.60m²	11.5m²	
FIRST FLOOR PLAN	43.31m²		BEDROOM 2	10.25m²	7.5m²	
			BEDROOM 3	7.70m²	7.5m²	
TOTAL FLOOR AREA M²	86.62m²	84.00m²				
TOTAL FLOOR AREA FT²	87ft²	904ft²				
			STORAGE			
			STORE KITCHEN / DINING	1.95		
			STORE BATHROOM	0.63		
			STORE BEDROOM 3	0.77m²		
			TOTAL BUILT IN STORAGE	2.93m²		2.5m²

FLOOR PLANS

NAME: SAWHNEY **DRG NO.: BSP989.2_04** **REV: 4.4** **AUG 2022**

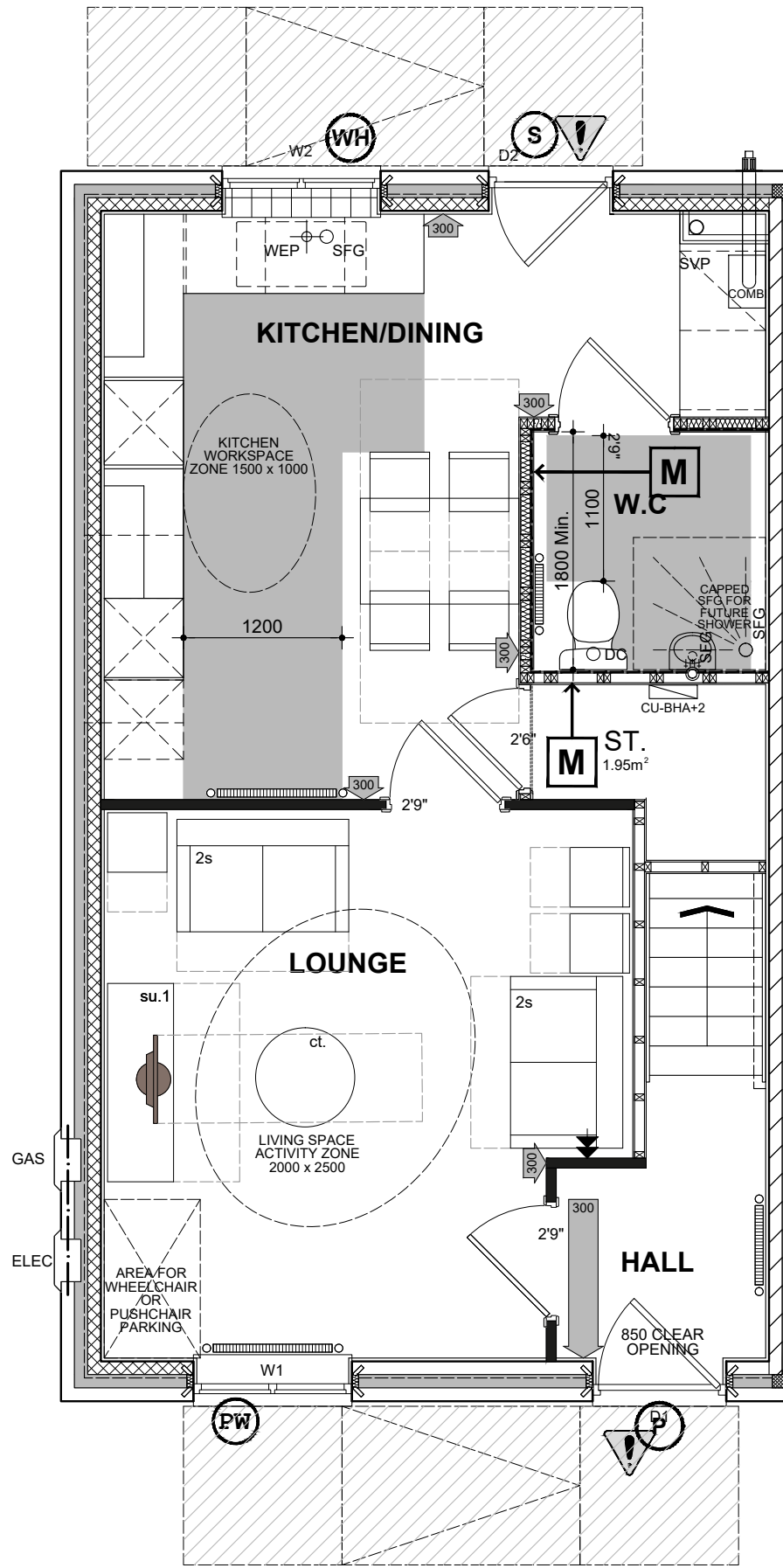
DRAWING: NATIONAL SPACE STANDARDS LAYOUT **SCALE: 1:50 @ A3** **DRAWING UPDATED IN LINE WITH LATEST ISSUE 4.4 NSS.3B4P**

DRAWN: TBW/APO **DATE: JAN 2020** **CHECKED: GM/APO**

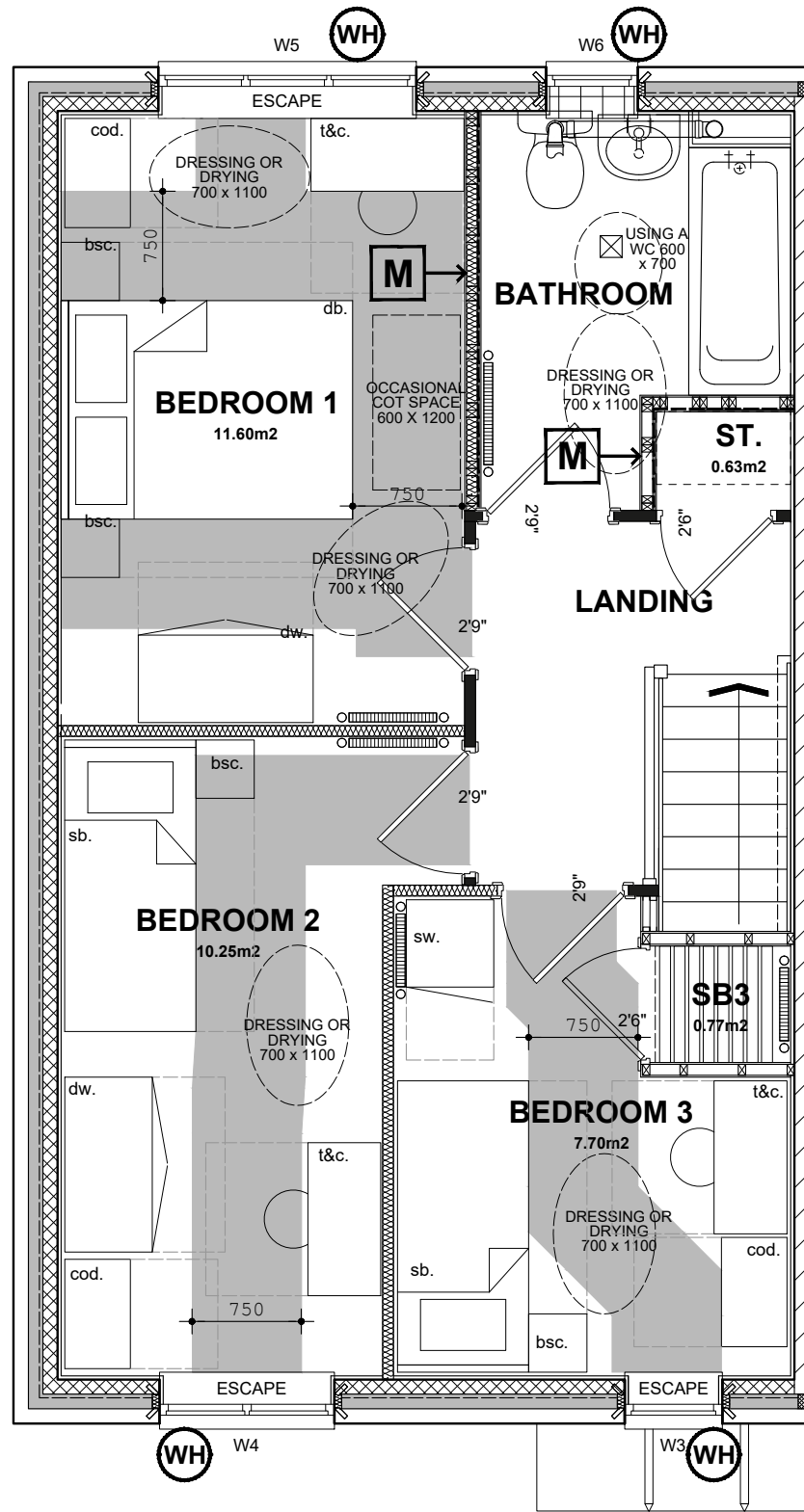
SPECIFICATION LEVEL: BASE

BLOOR HOMES

THIS DRAWING AND THE BUILDING WORKS DEPICTED ARE THE COPYRIGHT OF J.S.BLOOR (SERVICES) LIMITED AND MAY NOT BE REPRODUCED OR AMENDED EXCEPT BY WRITTEN PERMISSION.



BSP989SD NSS.M3B4P
GROUND FLOOR PLAN



BSP989SD NSS.M3B4P
FIRST FLOOR PLAN

(P) (DENOTES : PRINCIPLE PRIVATE ENTRANCE NOMINATED AS STEP FREE ACCESS. ENTRANCE DOOR TO COMPLY WITH PROVISIONS A - 1 OF PARAGRAPH 2.20 PART M4(2) PRIVATE ENTRANCES. WITH A LEVEL EXTERNAL LANDING MIN. WIDTH/DEPTH OF 1200MM. FULLY DIFFUSED AUTOMATED LIGHTING TO BE PROVIDED TO ENTRANCE.)

(PW) DENOTES : ENTRANCE DOORS TO HAVE 850mm CLEAR OPENING WIDTH. IN ACCORDANCE WITH PART M4 (2) DIAGRAM 2.2.

(WH) DOUBLE DOORS NOT CLASSED AS PRINCIPLE OR ALTERNATIVE ENTRANCE TO HAVE ONE OR BOTH LEAVES WITH 750MM CLEAR OPENING WIDTH OR BE ABLE TO BE OPERATED WITH SINGLE ACTION REASONABLY ACCESSIBLE TO WHEELCHAIR USER.

(M) NOTE : PLEASE REFER TO SITE LAYOUT FOR AN ALTERNATIVE PRIVATE ENTRANCE WHERE A STEP FREE ACCESS CANNOT BE ACHIEVED TO THE PRINCIPLE PRIVATE ENTRANCE.

(300) LEVEL EXTERNAL LANDING IS COVERED BY PORCH. MIN. WIDTH OF 900mm AND DEPTH OF 600mm FULLY DIFFUSED AUTOMATED LIGHTING TO BE PROVIDED TO ENTRANCE

(300) DENOTES : 300mm NIB IS PROVIDED TO THE LEADING EDGE OF ALL DOORS ON THE ENTRANCE STOREY.

(300) DENOTES : PRINCIPLE PRIVATE ENTRANCE A 300mm NIB IS PROVIDED TO THE LEADING EDGE AND THE EXTRA WIDTH MAINTAINED 1200mm BEYOND IT.

(300) 1200mm MIN. CLEAR SPACE IN FRONT OF AND BETWEEN ALL KITCHEN UNITS & APPLIANCES.

(PW) (DENOTES : PRINCIPLE LIVING SPACE, GLAZED DOOR OR WINDOW CILL TO START MAX. 850MM AFFL. HANDLE OF 1NO. MIN. WINDOW IN PRINCIPLE LIVING AREA BETWEEN 450MM - 1200MM AFFL, UNLESS FITTED WITH REMOTE OPENING DEVICE WITHIN THIS HEIGHT RANGE.)

(WH) (DENOTES: ALL OTHER WINDOWS TO HAVE HANDLES LOCATED BETWEEN 450MM-1400MM AFFL, UNLESS FITTED WITH A REMOTE OPENING DEVICE THAT IS FITTED WITHIN THIS HEIGHT RANGE.)

BOILER TIMER CONTROLS & THERMOSTATS SHOULD BE EITHER:
 • MOUNTED BETWEEN 900MM AND 1200MM ABOVE FINISHED FLOOR LEVEL ON THE BOILER, or
 • HAVE SEPARATE CONTROLLERS (WIRED or WIRELESS) MOUNTED ELSEWHERE IN AN ACCESSIBLE LOCATION WITHIN THE SAME HEIGHT RANGE

ALL WALLS, DUCTS AND BOXINGS TO THE WC/CLOAKROOM, BATHROOM AND SHOWER ROOM SHOULD BE STRONG ENOUGH TO SUPPORT GRAB RAILS, SEATS AND OTHER ADAPTATIONS THAT COULD IMPOSE A LOAD OF UP TO 1.5kN/m²

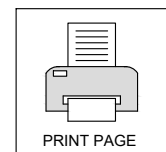
ACCESSIBLE BATHROOM WITH WC/BASIN/BATH ON THE SAME FLOOR AS THE PRINCIPLE DOUBLE BEDROOM.

BED REFERENCES:
 KSB - KING SIZE BED 1500 X 2000
 DB - DOUBLE BED 1900 X 1350
 SB - SINGLE BED 900 X 1900

DOUBLE BEDROOM (PRINCIPLE) TO HAVE 750mm CLEAR ACCESS ZONE TO BOTH SIDES AND FOOT OF BED.

SINGLE OR TWIN BEDROOM TO HAVE 750mm CLEAR ACCESS ZONE TO ONE SIDE OF BED.

REFER TO DETAILS **IS906.1** & **IS906.2** FOR FURTHER INFORMATION.



ALL WINDOWS ON FRONT ELEVATIONS TO HAVE MATCHING CASEMENTS AND REBATES SUFFICIENT TO ACCOMMODATE MINIMUM 24mm O/A SEALED UNITS. EXTRACTOR FAN DUCTING TO TERMINATE THROUGH AIR BRICKS. WINDOWS TO WETROOMS TO BE TOP HUNG WITH OBSCURE GLAZING FOR PRIVACY. EXTERNAL WALL (BRICK) THROUGH COLOUR CONCRETE HEAD & CILL DETAILS WITH CAVALOK CAVITY CLOSERS SEE DETAIL EW200.1 FOR GRP PORCH COMPONENTS SEE EXALLOT DETAIL. FOR 2 COURSE STRING SEE DETAIL ET802. FRONT DOOR REF: DS4/1001 THROUGH COLOUR DOOR PROVIDED BY VISTA SEE DETAIL WD700

RAINWATER DOWN PIPES ARE SHOWN INDICATIVE REFER TO THE ENGINEERS DRAWING FOR EXACT LOCATION.

FOR EXTERNAL WALL LIGHT LOCATION SEE DETAIL IS906

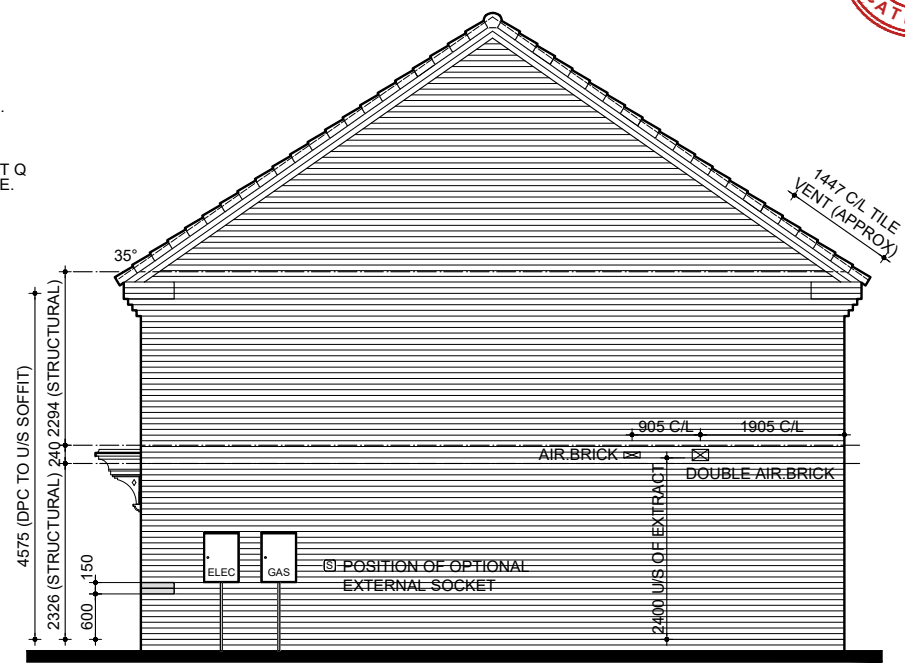
GRP PORCH CANOPY RAISED ONE COURSE ABOVE DOOR HEAD SEE DETAIL ET809.1

FE DENOTES WINDOWS TO BE SUPPLIED AS FIRE ESCAPE SEE EUROCELL WINDOW SPECIFICATION FOR TYPE.
EC DENOTES WINDOWS TO BE SUPPLIED EASY CLEAN HINGES.
OB DENOTES WINDOWS TO BE SUPPLIED OBSCURE GLAZED.
Q WINDOWS & DOORS TO BE PART Q COMPLIANT WHERE APPLICABLE. SEE DETAIL WD703

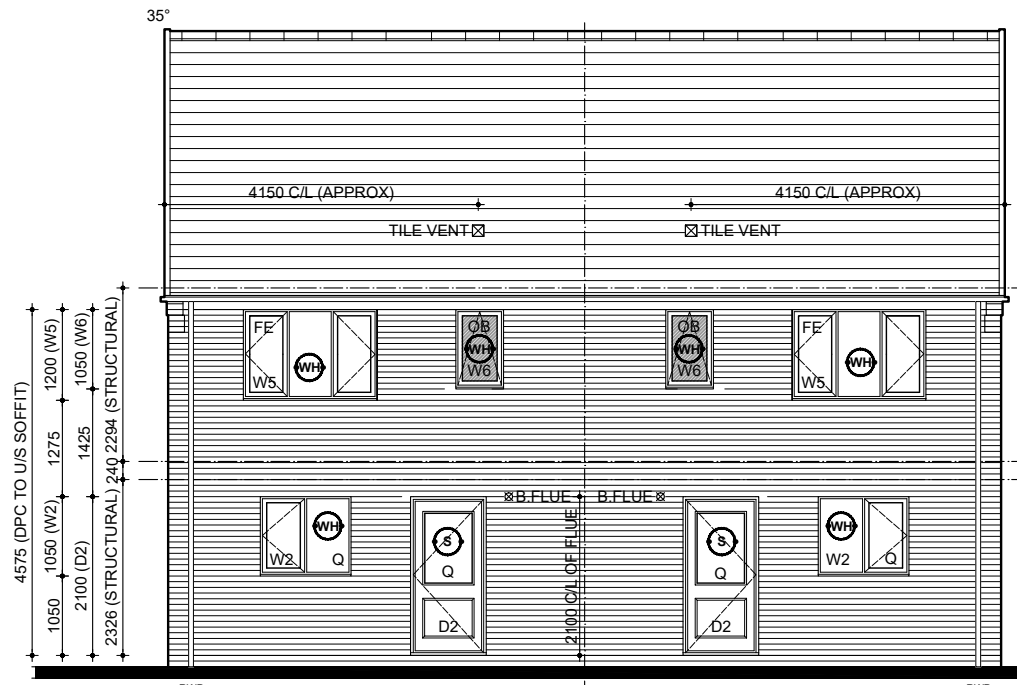
(FW) (DENOTES: PRINCIPLE LIVING SPACE, GLAZED DOOR OR WINDOW CILL TO START MAX 850MM AFFL. HANDLE OF 1NO. MIN. WINDOW IN PRINCIPLE LIVING AREA BETWEEN 450MM - 1200MM AFFL. UNLESS FITTED WITH REMOTE OPENING DEVICE WITHIN THIS HEIGHT RANGE.)
(WH) (DENOTES: ALL OTHER WINDOWS TO HAVE HANDLES LOCATED BETWEEN 450MM-1400MM AFFL. UNLESS FITTED WITH A REMOTE OPENING DEVICE THAT IS FITTED WITHIN THIS HEIGHT RANGE.)
(P) (DENOTES: PRINCIPLE PRIVATE ENTRANCE NOMINATED AS STEP FREE ACCESS. ENTRANCE DOOR TO COMPLY WITH PROVISIONS A - I OF PARAGRAPH 2.20 PART M4(2) PRIVATE ENTRANCES. WITH A LEVEL EXTERNAL LANDING MIN. WIDTH/DEPTH OF 1200MM. FULLY DIFFUSED AUTOMATED LIGHTING TO BE PROVIDED TO ENTRANCE.)
(S) (DENOTES: EXTERNAL DOOR TO HAVE STEP FREE APPROACH AND AN ACCESSIBLE THRESHOLD AND LEVEL EXTERNAL LANDING MIN. WIDTH / DEPTH OF 1200MM.)



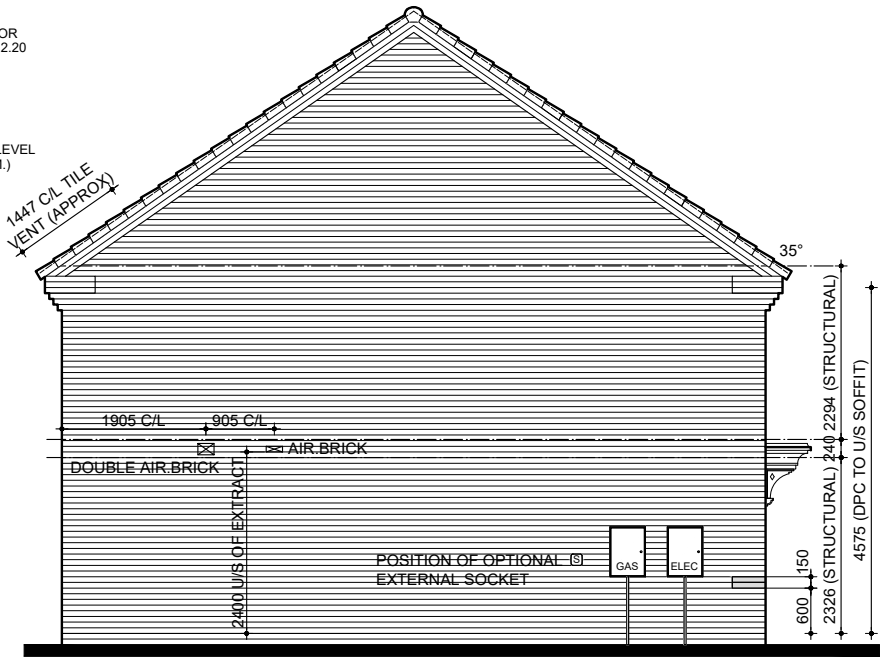
BSP989SD NSS.M3B4P
FRONT ELEVATION



BSP989SD-1 NSS.M3B4P
SIDE ELEVATION

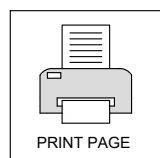


BSP989SD-1 NSS.M3B4P
REAR ELEVATION



BSP989SD NSS.M3B4P
SIDE ELEVATION

BRICK





REV: 4.4 AUG 2022

DRAWING UPDATED IN LINE WITH LATEST ISSUE 4.4 NSS.3B4P



DRG NO.: BSP989.2_07

SCALE: 1:50 @ A3

DATE: JAN 2020

DRAWN: TBW/APO

CHECKED: GM/APO

NAME: SAWHNEY

DRAWING: SECTION A-A & B-B

SPECIFICATION LEVEL: BASE

THIS DRAWING AND THE BUILDING WORKS DEPICTED ARE THE COPYRIGHT OF J.S.BLOOR (SERVICES) LIMITED AND MAY NOT BE REPRODUCED OR AMENDED EXCEPT BY WRITTEN PERMISSION.



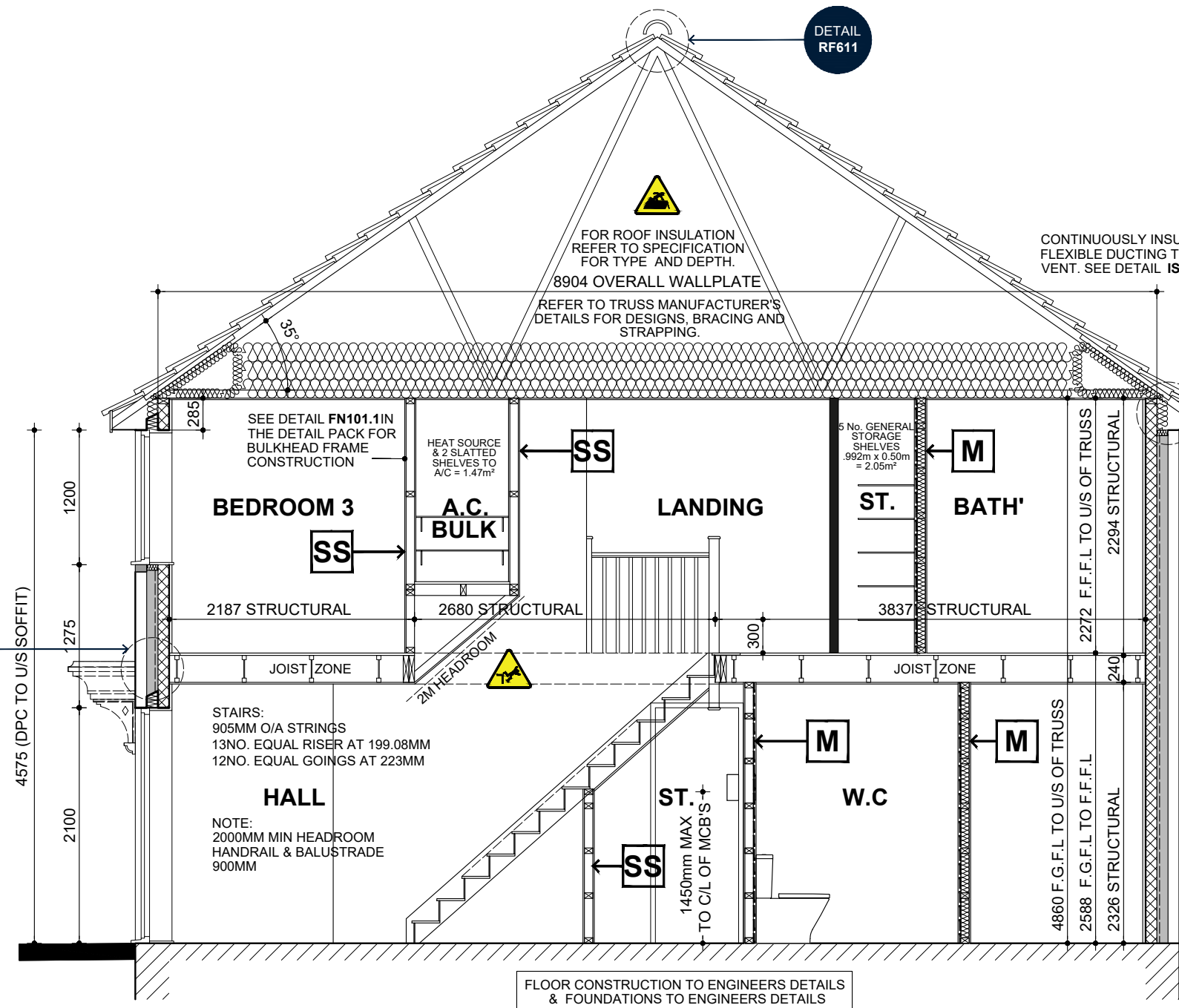
DETAIL FJ501

DETAIL RF611

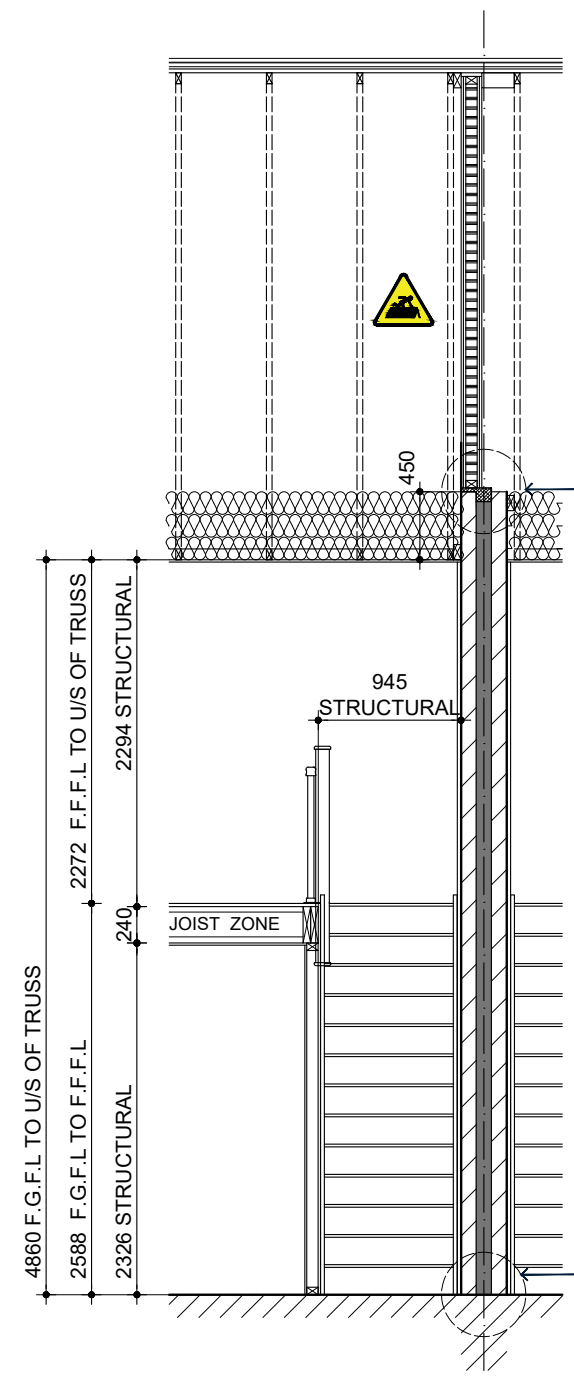
DETAIL RF601

DETAIL PW304

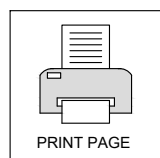
DETAIL FN101.1



SECTION A-A



SECTION B-B





AUG 2022

REV: **4.4**

DRAWING UPDATED IN LINE WITH LATEST ISSUE 4.4 NSS.3B4P

BLOOR HOMES

DRG NO.: **BSP989.2_08**

SCALE: **1:50 @ A3**

DATE: **JAN 2020**

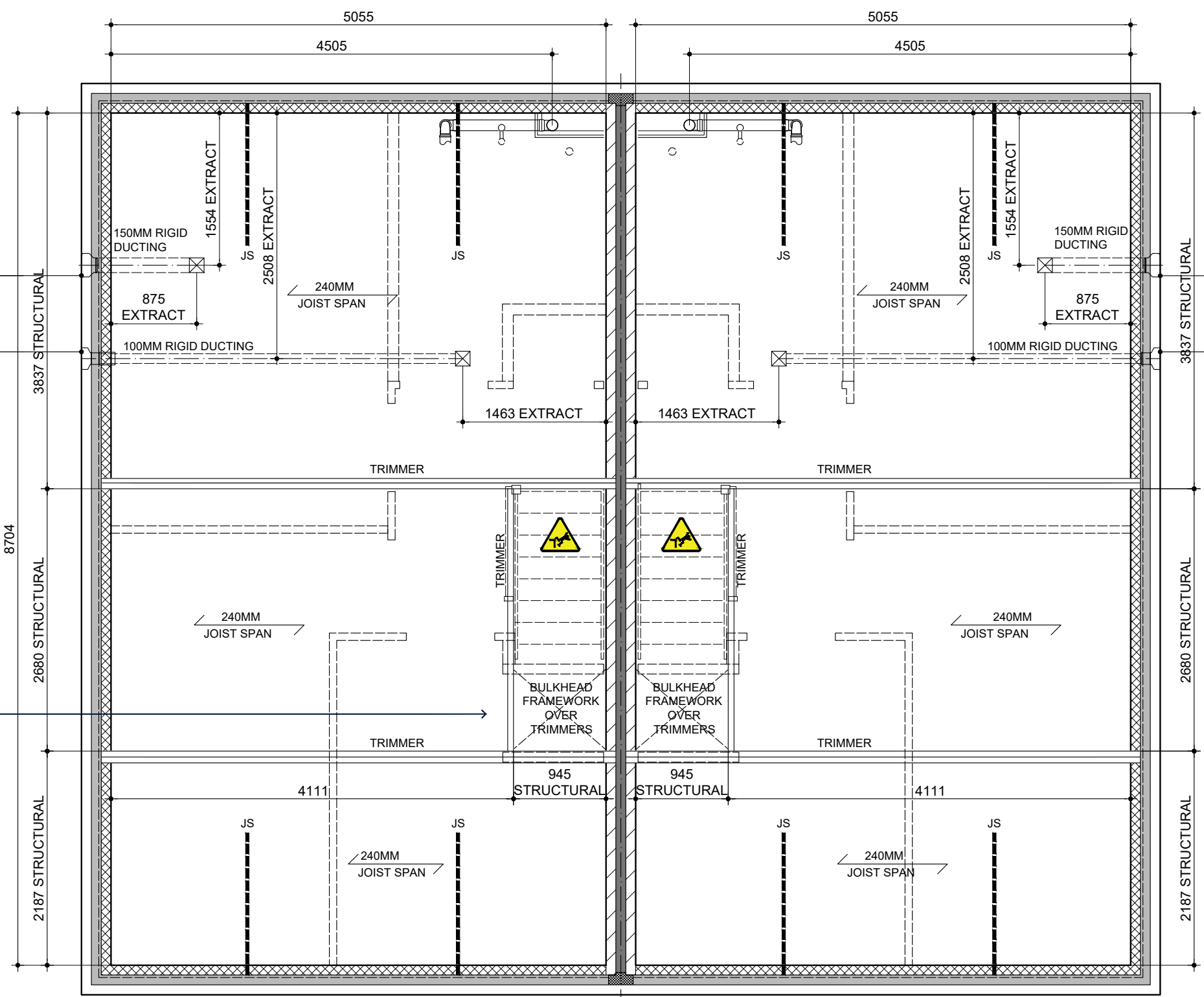
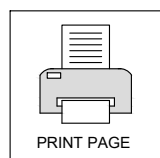
DRAWN: **TBW/APO**

CHECKED: **GMAPO**

NAME: **SAWHNEY**

DRAWING: **JOIST SETTING OUT**

SPECIFICATION LEVEL: **BASE**



ADAPT-AIR DOUBLE AIR BRICK AND ADAPTOR (6550+air brick colour) FOR 150MM DUCTING WITH CAVITY TRAY OVER TO EXTEND EITHER SIDE OF AIR BRICK BY 150MM. SEE MANUFACTURERS PRODUCT INFORMATION **6650**

MANTHORPE BUILDING PRODUCTS COMBINATION AIR BRICK (G930) AND REMOTE VOID VENTILATOR (G962) WITH CAVITY TRAY OVER TO EXTEND EITHER SIDE OF AIR BRICK BY 150MM. SEE MANUFACTURERS PRODUCT INFORMATION **MBP8194b_MBP8195**

ADAPT-AIR DOUBLE AIR BRICK AND ADAPTOR (6550+air brick colour) FOR 150MM DUCTING WITH CAVITY TRAY OVER TO EXTEND EITHER SIDE OF AIR BRICK BY 150MM. SEE MANUFACTURERS PRODUCT INFORMATION **6650**

MANTHORPE BUILDING PRODUCTS COMBINATION AIR BRICK (G930) AND REMOTE VOID VENTILATOR (G962) WITH CAVITY TRAY OVER TO EXTEND EITHER SIDE OF AIR BRICK BY 150MM. SEE MANUFACTURERS PRODUCT INFORMATION **MBP8194b_MBP8195**

WHERE SVP PASSES THROUGH FLOOR VOID, INSULATION TO BE CARRIED THROUGH FLOOR AND SEAL ALL GAPS TO PREVENT SOUND TRANSMISSION **IS900**

CUTTING HOLES THROUGH JOISTS TO BE DONE IN ACCORDANCE TO MANUFACTURERS DETAILS.

ALL FLOOR JOISTS AT JUNCTION OF EXTERNAL WALLS TO BE BUILT IN AND SEALED USING A PROPRIETY CLOSURE TO AVOID AIR LEAKAGE. **FJ500** APPENDIX A OF THE ROBUST DETAILS.

GALVANISED MASONRY RESTRAINT STRAPS FIXED TO MIN. 3NO. JOISTS & AT MAX. 2000MM CENTRES SEE MANUFACTURERS DETAILS. (MIN. CROSS SECTIONAL AREA - 30x5MM)

DETAIL **FJ503**



BSP989SD NSS.M3B4P NSS.M3B4P BSP989SD-1
JOIST SETTING OUT
240MM DEEP ENGINEERED JOISTS @ MAX.600 CRS
JOIST MANUFACTURER TO CONFIRM DETAILS OF DESIGN & BRACING



AUG 2022

REV: **4.4**

DRAWING UPDATED IN LINE WITH LATEST ISSUE 4.4 NSS.3B4P

REV:

BLOOR HOMES

DRG NO.: **BSP989.2_09**

SCALE: **1:50 @ A3**

DATE: **JAN 2020**

DRAWN: **TBW/APO**

CHECKED: **GMA/PO**

NAME: **SAWHNEY**

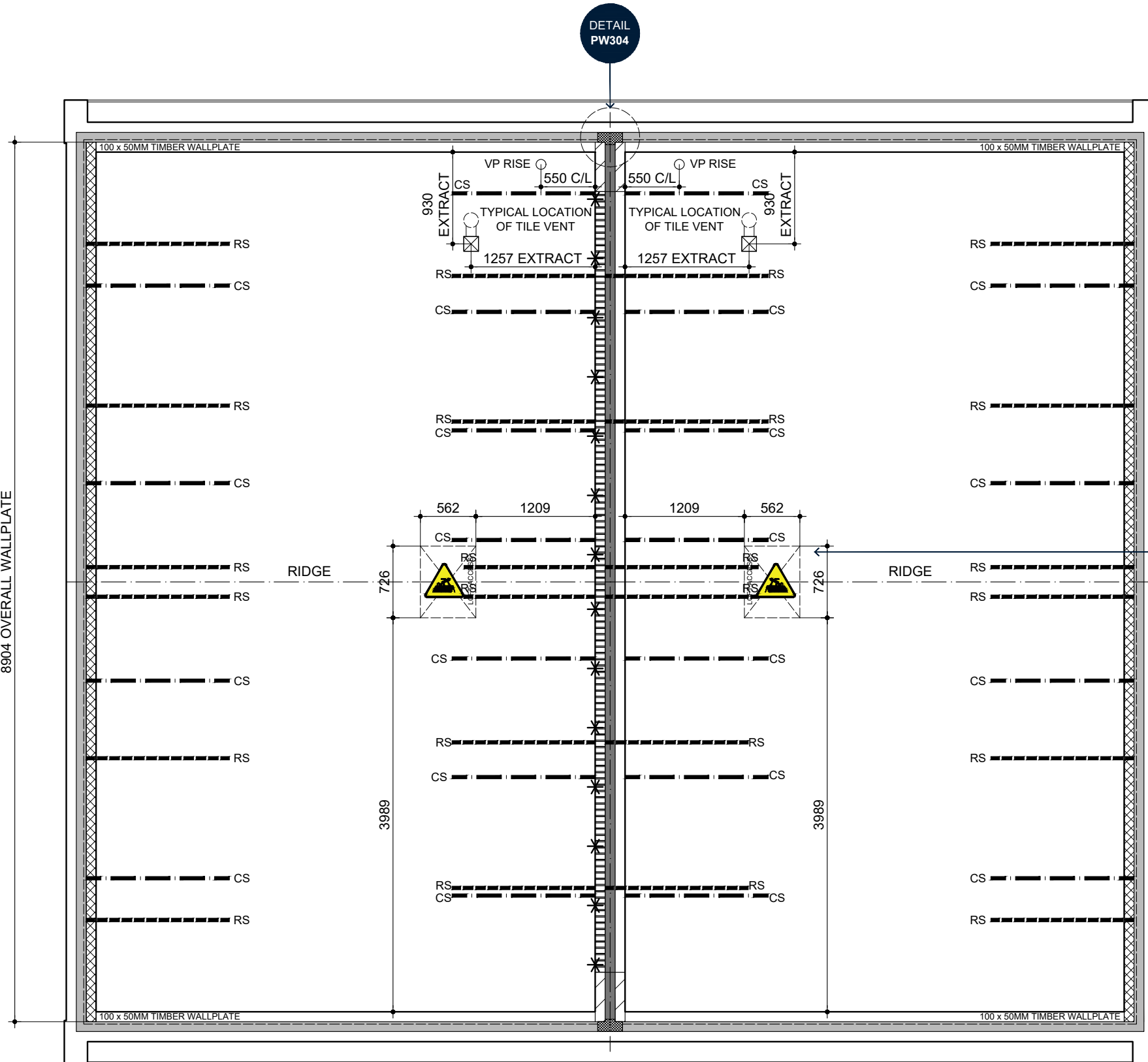
DRAWING: **TRUSS SETTING OUT**

SPECIFICATION LEVEL: **BASE**

THIS DRAWING AND THE BUILDING WORKS DEPICTED ARE THE COPYRIGHT OF J.S.BLOOR (SERVICES) LIMITED AND MAY NOT BE REPRODUCED OR AMENDED EXCEPT BY WRITTEN PERMISSION.



8904 OVERALL WALLPLATE



TRUSS ERECTION RISK ASSESSMENT & METHOD STATEMENT

A SUMMARY OF THE AREAS THAT NEED TO BE ADDRESSED IN THE METHOD STATEMENT -

1. FALLS FROM HEIGHT
2. TRUSS RAFTER ASSOCIATION RAMS GUIDANCE
3. SPANDREL PANELS (DESIGN DETAIL)
4. TEMPORARY BRACING REQUIREMENTS
5. WEATHER CONDITIONS

INSULATED FLEXIBLE DUCTING TO ROOF TILE VENT, SEE DETAIL **IS911.3**

DETAIL RF610

30 x 5MM GALVANISED M.S. RESTRAINT STRAPS, FIXED TO 3 No TRUSSES.

TO GABLE WALLS AT MAX 2000mm CENTRES AT RAFTER AND CEILING LEVEL

TO PARTY WALL SPANDREL PANEL AT MAX 1800mm CENTRES AT RAFTER LEVEL AND 1200mm CENTRES AT PARTY WALL LEVEL. SEE DETAIL **PW304**

--- RS = ROOF STRAP
--- CS = CEILING STRAP

DENOTES PARTY WALL SPANDREL PANEL STRAPS. REFER TO MANUFACTURERS DETAIL FOR DESIGN OF SPANDREL PANEL AND DETAIL **PW304** FOR STRAPPING REQUIREMENTS.

FOR CORBEL VERGE TREATMENT SEE DETAIL. **ET801.2** BRICK CORBEL **ET801.3** STONE CORBEL

BSP989SD

NSS.M3B4P

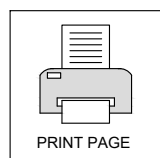
NSS.M3B4P

BSP989SD-1

MAIN ROOF PITCH 35°

TRUSS SETTING OUT

ROOFSCAPE PLAN TO BE READ IN CONJUNCTION WITH ARNOLD LAVER DESIGN AND DETAILED DRAWINGS.





REV: 4.4 AUG 2022

DRAWING UPDATED IN LINE WITH LATEST ISSUE 4.4 NSS.384P



DRG NO.: BSP989.2_10

SCALE: 1:50 @ A3

DATE: JAN 2020

DRAWN: TBW/APO

CHECKED: GM/APO

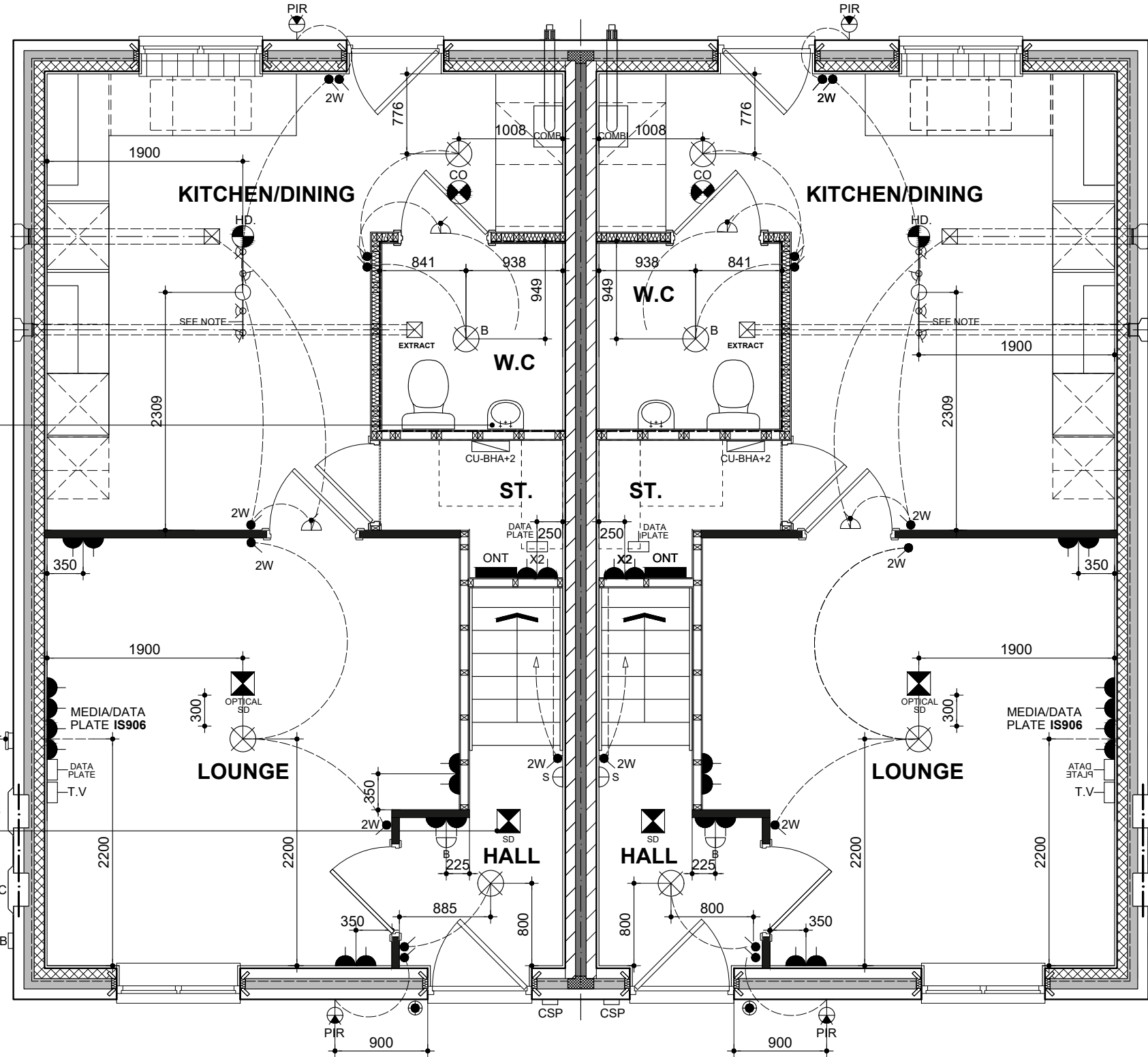
NAME: SAWHNEY

DRAWING: GF ELECTRICAL LAYOUT

SPECIFICATION LEVEL: BASE

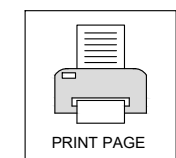
THIS DRAWING AND THE BUILDING WORKS DEPICTED ARE THE COPYRIGHT OF J.S.BLOOR (SERVICES) LIMITED AND MAY NOT BE REPRODUCED OR AMENDED EXCEPT BY WRITTEN PERMISSION.

FOR PART M BOILER CONTROLS AND THERMOSTAT HEIGHTS REFER TO IS906.1



BSP989SD GROUND FLOOR PLAN (Electrical Layout)

BSP989SD-1



RENTED: BATTEN LIGHT
SHARED: 4 LIGHT TRACK LIGHT

CO DENOTES CO ALARMS INSTALLED IN ACCORDANCE WITH THE MANUFACTURER'S INSTRUCTIONS. LOCATED 300MM AWAY FROM A WALL AND BETWEEN 1 AND 3 METRES (MEASURED HORIZONTALLY FROM A POTENTIAL SOURCE OF HEAT) CO ALARMS MUST BE LEFT IN WORKING ORDER ONCE INSTALLATION IS COMPLETE.

HD. DENOTES CEILING MOUNTED COMPATIBLE INTERLINKED HEAT DETECTOR TO COMPLY IN ALL RESPECTS WITH BS 5446: PART 2:2003 & INSTALLED IN ACCORDANCE WITH BS 5839-6:2013

LOCATION OF PV MAIN ISOLATION SWITCH AND GENERATION METER IF REQUIRED (SEE PLOT LOG FOR GUIDANCE) FOR PV PANEL CONFIGURATIONS AND LOCATION SEE SEPARATE DESIGNS BY VIRIDIAN SOLAR.

POSITION OF OPTIONAL EXTERNAL POWER SOCKET. REFER TO OPTIONS BROCHURE FOR TYPE.

SMOKE DETECTORS TO BE MIN 300MM FROM LIGHT FITTINGS AND WALLS. SEE DETAIL IS901

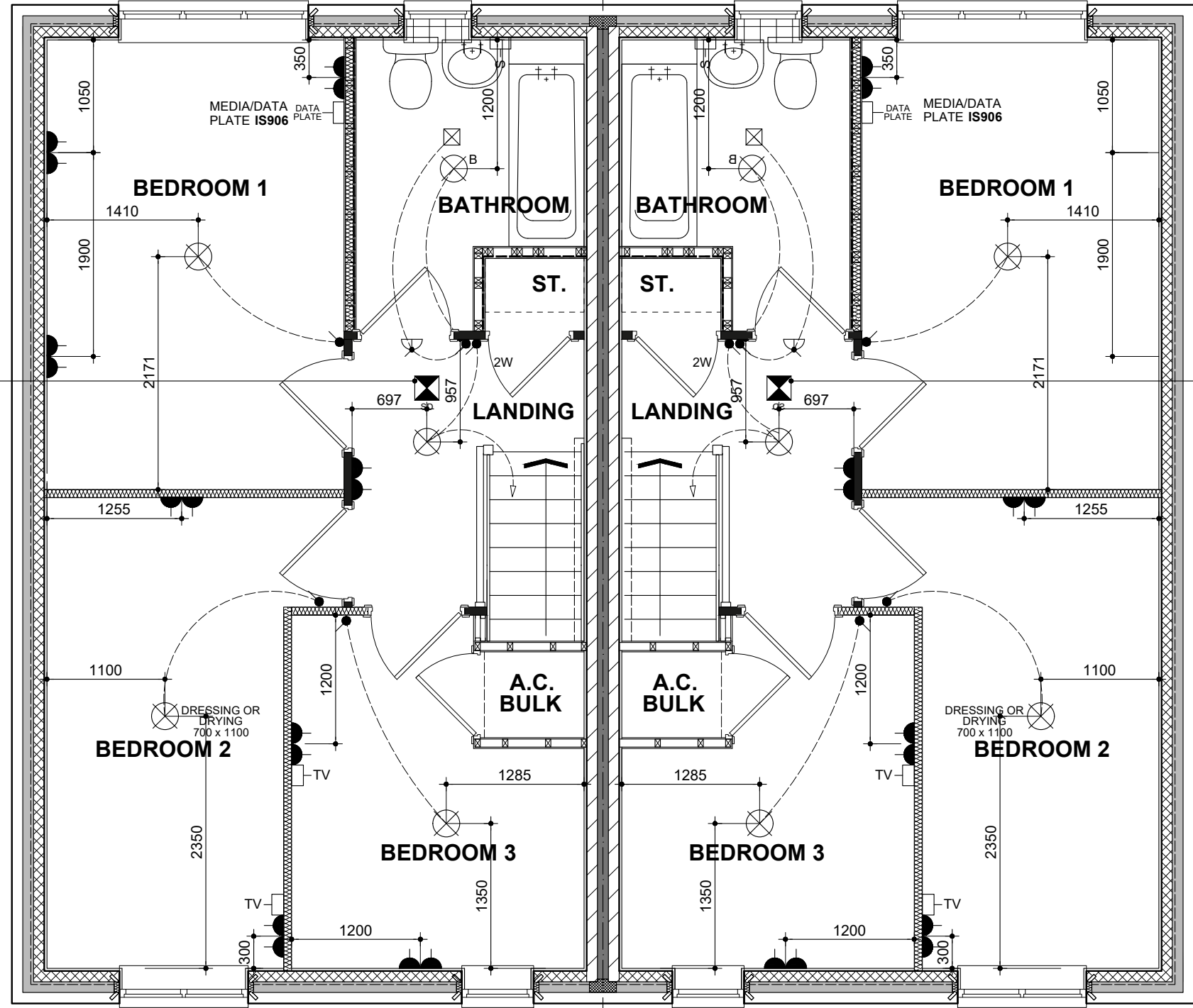
- PIR
- EXT SKT
- S
- SHAVR
- OPTNLT
- DOWNLT
- CIRCLR
- TRCKLT
- BATTEN
- PENDANT
- THERM
- ELEC
- PULL
- CLIENT
- LIGHT
- 2WAY
- CEILING
- ONT
- CSP
- ETB
- CU
- SMOKE
- CO
- HD
- PIR
- EXT SKT
- S
- SHAVR
- OPTNLT
- DOWNLT
- CIRCLR
- TRCKLT
- BATTEN
- PENDANT
- THERM
- ELEC
- PULL
- CLIENT
- LIGHT
- 2WAY
- CEILING
- ONT
- CSP
- ETB
- CU
- SMOKE
- CO
- HD
- PIR





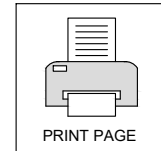
SMOKE DETECTORS TO BE MIN 300MM FROM LIGHT FITTINGS AND WALLS. SEE DETAIL IS901

SMOKE DETECTORS TO BE MIN 300MM FROM LIGHT FITTINGS AND WALLS. SEE DETAIL IS901



BSP989SD
FIRST FLOOR PLAN (Electrical Layout)

BSP989SD-1



- PIR
- EXT SKT
- S-S
- SHAVER
- EXT SW
- EXT SOCKET
- OPT DOWNLIGHT
- DOWNLIGHT
- 3 LIGHT
- 4 LIGHT
- TRACKLIGHT
- BATTENLIGHT
- PENDANTLIGHT
- THERMOSTAT
- ELECTRIC POWER SHOWER
- PULL UP
- CLIENT OPTIONAL
- LIGHT SWITCH
- 2WAY
- CEILING MOUNTED
- ONT
- CSP
- ETB
- CU
- DOORBELL
- SMOKE DETECTOR
- DOUBLE SOCKET
- EXTERNAL LIGHT WITH BUILT IN PIR
- EXTERNAL SWITCHED SOCKET
- SHAVER SOCKET
- EXT SW
- EXT SOCKET
- OPT DOWNLIGHT
- DOWNLIGHT
- 3 LIGHT
- 4 LIGHT
- TRACKLIGHT
- BATTENLIGHT
- PENDANTLIGHT
- THERMOSTAT
- ELECTRIC POWER SHOWER
- PULL UP
- CLIENT OPTIONAL
- LIGHT SWITCH
- 2WAY
- CEILING MOUNTED
- ONT
- CSP
- ETB
- CU
- DOORBELL
- SMOKE DETECTOR
- DOUBLE SOCKET

REV: 4.4 AUG 2022

DRAWING UPDATED IN LINE WITH LATEST ISSUE 4.4 NSS.3B4P



DRG NO.: BSP989.2_11

SCALE: 1:50 @ A3

DATE: JAN 2020

DRAWN: TBW/APO

CHECKED: GM/APO

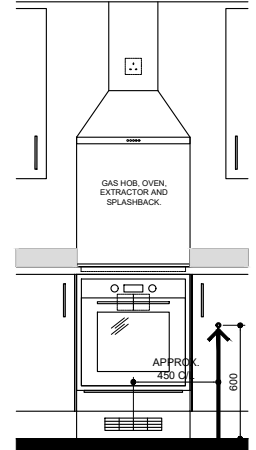
NAME: SAWHNEY

DRAWING: FF ELECTRICAL LAYOUT

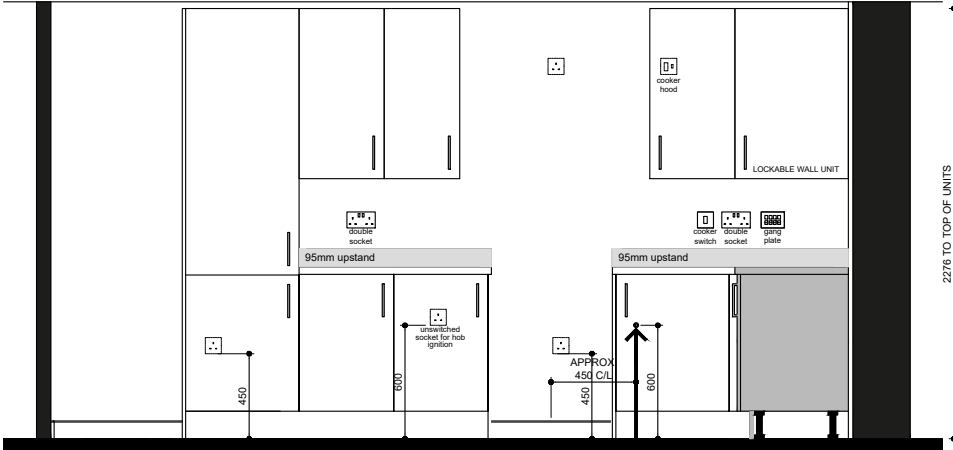
SPECIFICATION LEVEL: BASE



SHARED SPECIFICATION ONLY

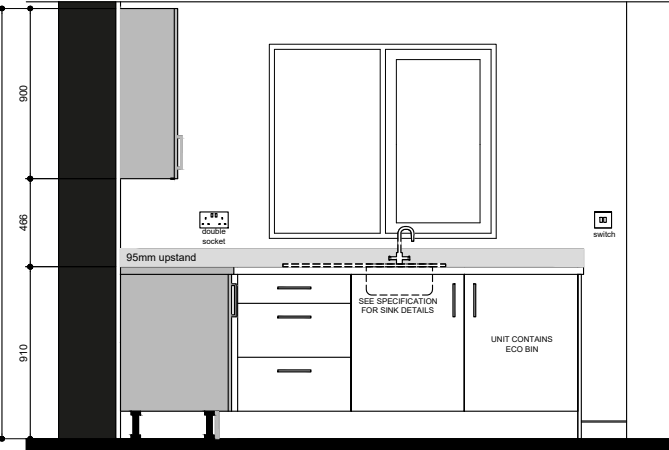


LOCATION OF GAS HOB ISOLATION VALVE. GAS PIPE TERMINATION TO BE MAX 450MM FROM C/L OF HOB

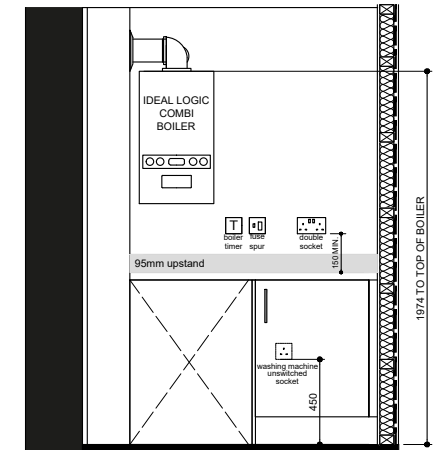


KITCHEN ELEVATION 'A'

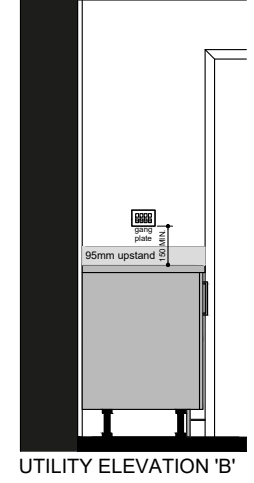
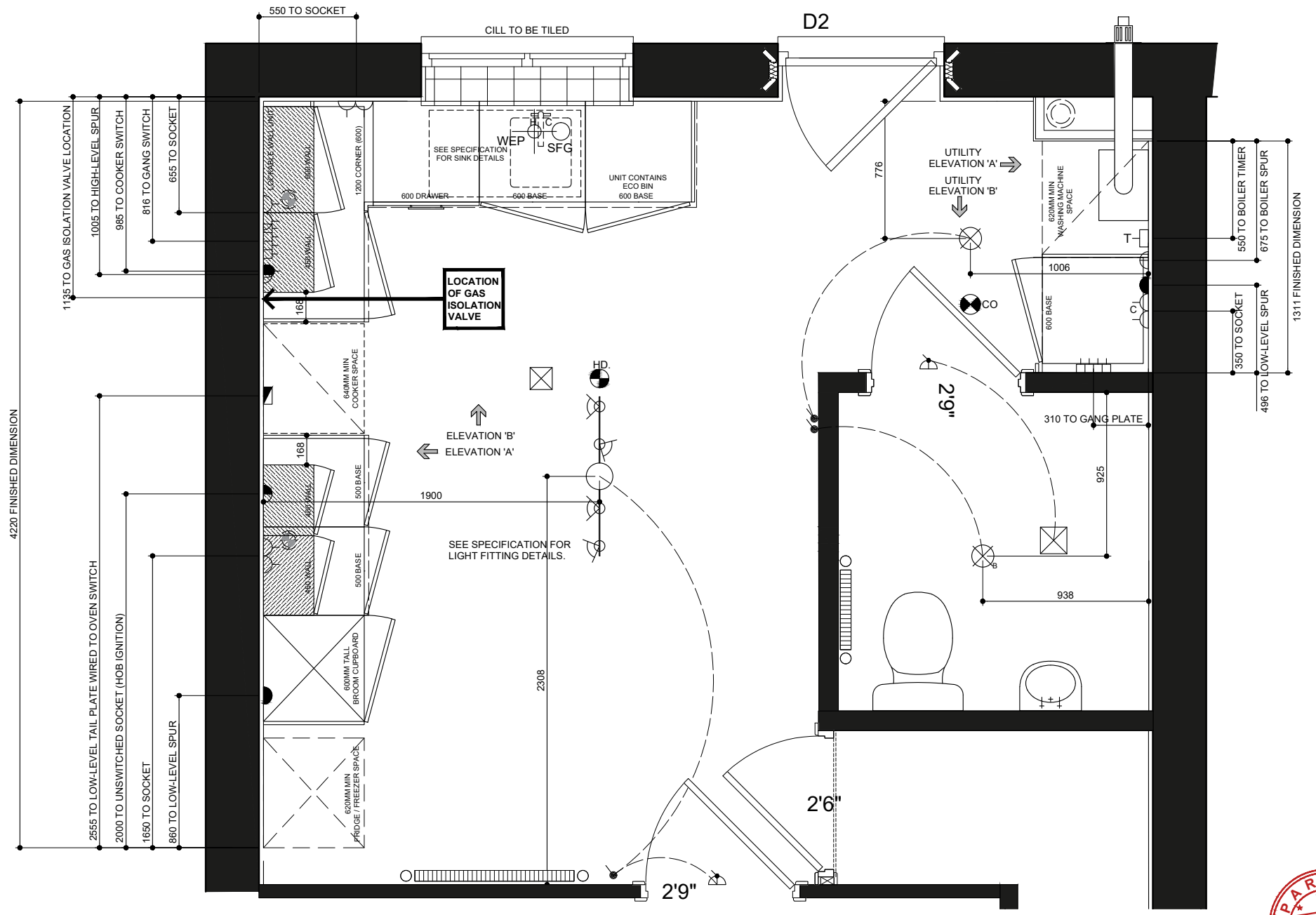
LOCATION OF GAS HOB ISOLATION VALVE. GAS PIPE TERMINATION TO BE MAX 450MM FROM C/L OF HOB



KITCHEN ELEVATION 'B'



UTILITY ELEVATION 'A'



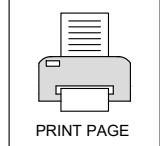
UTILITY ELEVATION 'B'

SPECIFICATION

- RENTED BASE**
- SINGLE BOWL SINK
- BATTEN LIGHT
- SHARED BASE**
- 1 1/2 BOWL SINK
- BATTEN LIGHT
- STAINLESS STEEL ELECTRIC HOB, OVEN, EXTRACTOR & SPLASHBACK.
- SHARED LEVEL 1 - UPLIFT**
- DELTA UNDER CUPBOARD LIGHTING (MAX. 3)
- 4 BULB TRACK LIGHT
- UPGRADE KITCHEN UNITS BLOOR PRIVATE SALE LEVEL 2
- MASON MITRE TO JOINTS

REQUIRED CUBIC CAPACITY: 2.2M³
ACHIEVED CUBIC CAPACITY: 2.34M³

SOCKETS & SWITCHES TO BE SET AT MIN. 150MM
BS6172 STATES THAT WALL CABINETS TO BE MIN 150MM AWAY FROM COOKER WITH EYE LEVEL GRILL
FUSED SPUR WITH FEED TO RUN BEHIND PLASTERBOARD TO EXTRACTOR.



- 13 AMP P SWITCHED SOCKET (1000MM FROM FLOOR TO US OF SOCKET)
- 13 AMP FUSED SPUR (IN LINE WITH SWITCHED SOCKETS ABOVE WORK TOP)
- 13 AMP UNSWITCHED SOCKET WIRED TO GANG SWITCH (HIGH LEVEL) 1930MM FROM FLOOR TO US OF SOCKET
- 13 AMP UNSWITCHED SOCKET WIRED TO GANG SWITCH (LOW LEVEL) 150MM FROM FLOOR TO US OF SOCKET
- HOB/OVEN TAIL PLATE WIRED TO CONTROL FEED SWITCH (600MM FROM FLOOR TO US OF CONNECTION UNIT)
- GANG SWITCH (IN LINE WITH SWITCHED SOCKETS ABOVE WORK TOP)
- 45 AMP HOB/OVEN CONTROL FEED SWITCH (TO SUIT COOKER POWER RATING)
- BOILER PROGRAMMER/TIMER
- CH HOT & COLD WATER FEED
- CEILING MOUNTED EXTRACTOR FAN
- 2 WAY LIGHT SWITCH
- 3 WAY LIGHT SWITCH
- SW LIGHT SWITCH
- BATTEN LIGHT & SWITCH
- DELTA UNDER CUPBOARD LIGHTING (MAX. 3)

For specification requirements and level uplifts, Refer to Contract pack for New Build Affordable Homes (YELLOW) Rented / Shared, Base / Level 1

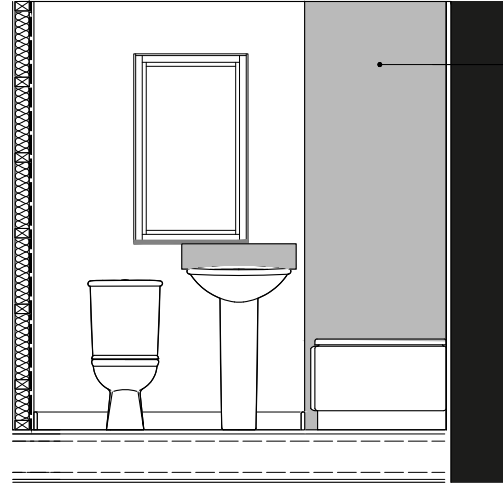
NAME: **SAWHNEY**
 DRAWING: **KITCHEN ELECTRICAL**
 SPECIFICATION LEVEL: **BASE**

DRG NO.: **BSP989.2_12**
 SCALE: **1:30:40 @ A3**
 DATE: **JAN 2020**
 DRAWN: **TBW/APO**
 CHECKED: **GMA/PO**

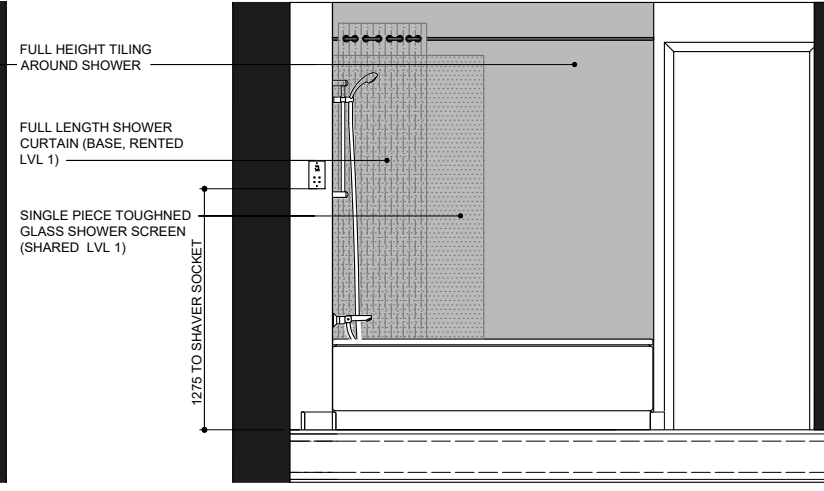
REV: **4.4**
 AUG 2022
 DRAWING UPDATED IN LINE WITH LATEST ISSUE 4.4 NSS.3B4P

BLOOR HOMES

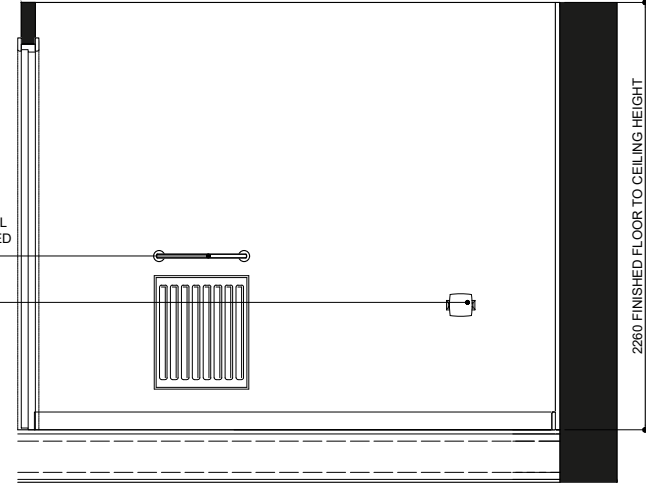
THIS DRAWING AND THE BUILDING WORKS DEPICTED ARE THE COPYRIGHT OF J.S.BLOOR (SERVICES) LIMITED AND MAY NOT BE REPRODUCED OR AMENDED EXCEPT BY WRITTEN PERMISSION.



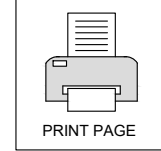
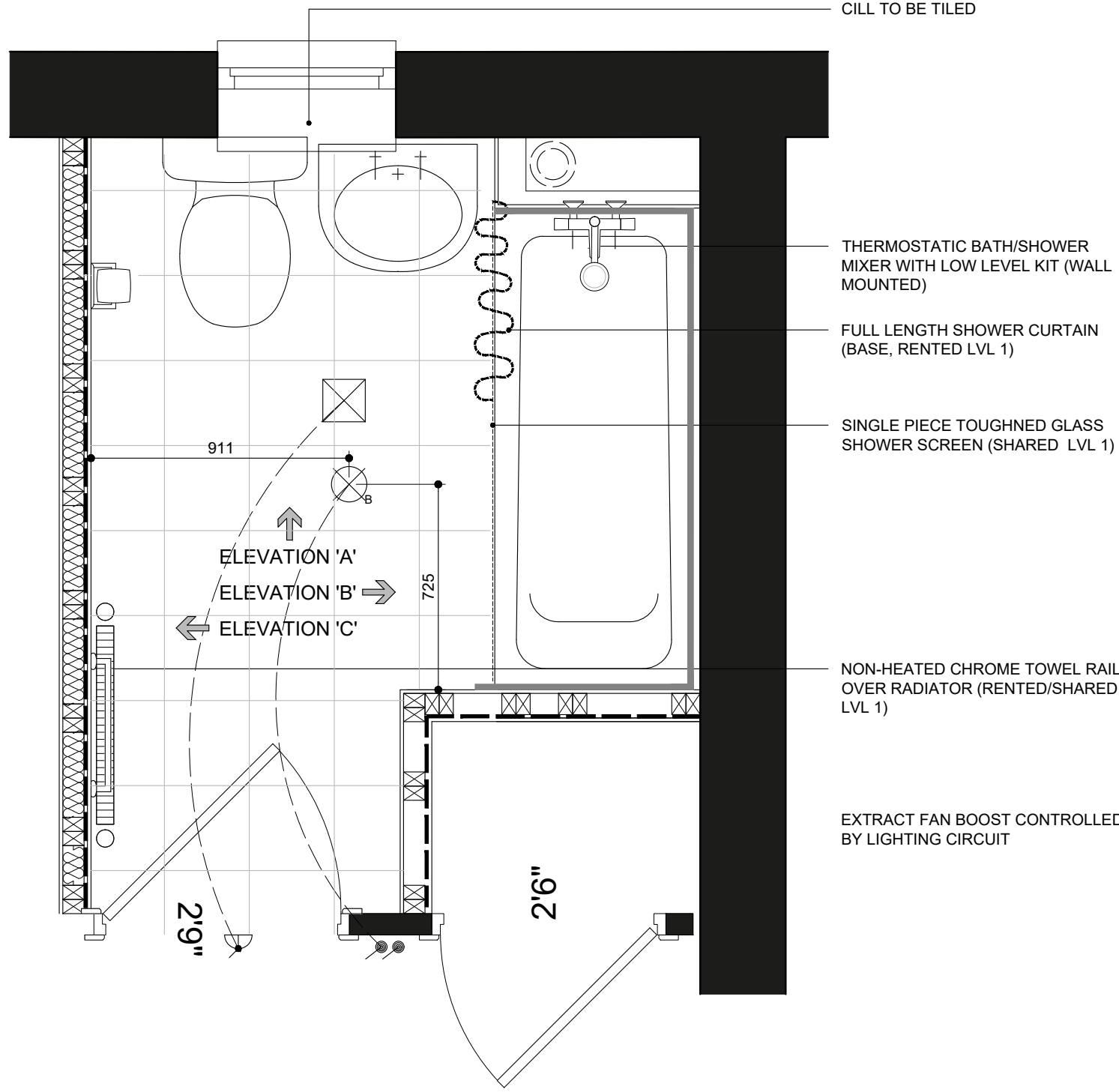
BATHROOM ELEVATION 'A'



BATHROOM ELEVATION 'B'



BATHROOM ELEVATION 'C'



- FUSED SWITCH
- LIGHT SWITCH
- BATTEN LIGHT
- SHAVER SOCKET
- INDICATIVE RADIATOR POSITION; REFER TO HEATING DESIGN FOR EXACT LOCATION & SIZE
- NON-HEATED CHROME TOWEL RAIL OVER RADIATOR
- DENOTES AREAS TO BE TILED ON PLANS
- DENOTES AREAS TO BE TILED ON ELEVATIONS
- SLIP RESISTANT VINYL SHEET COVERING



SOCIAL BATHROOM

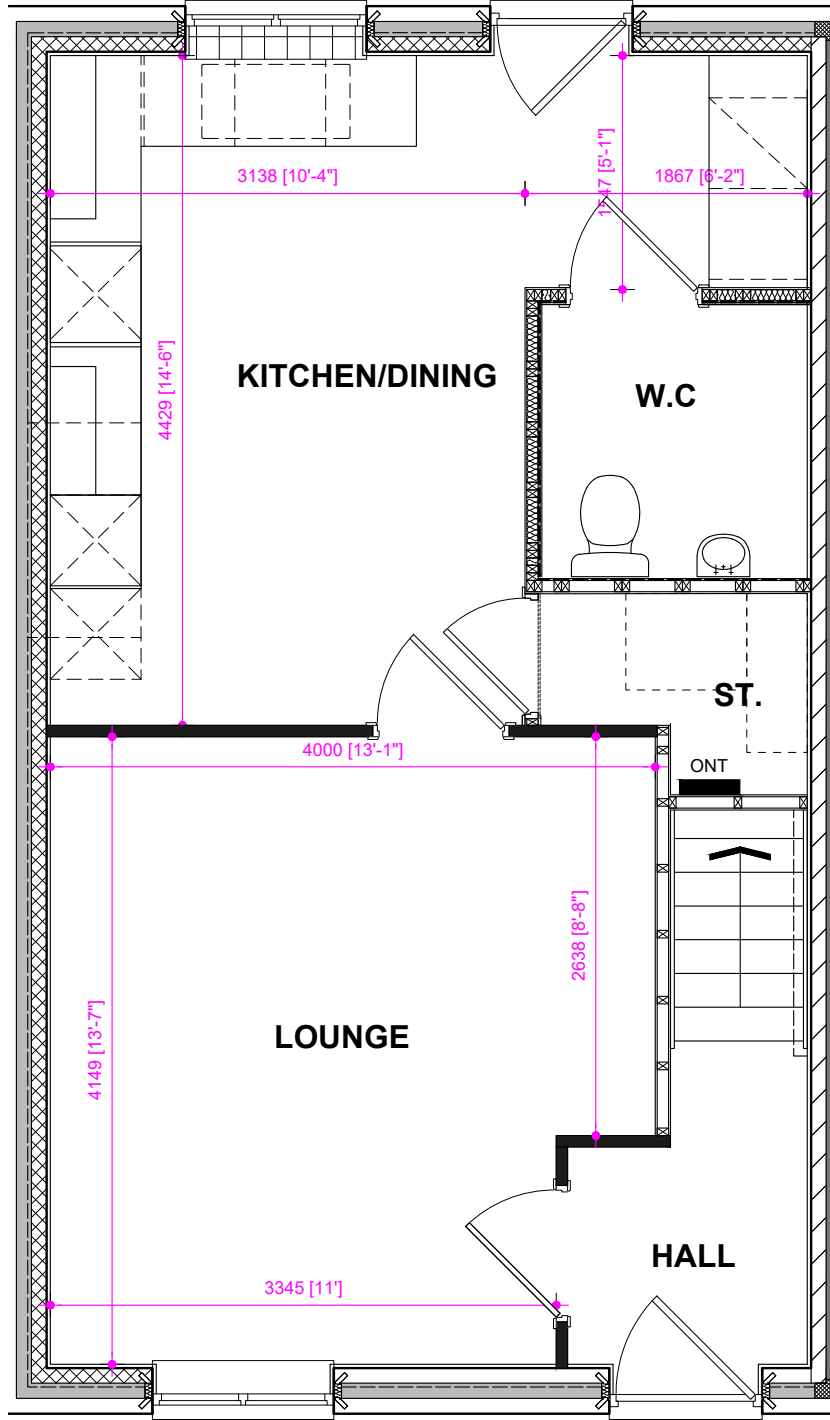
NAME: **SAWHNEY**
 DRAWING: BATHROOM LAYOUT
 SPECIFICATION LEVEL: BASE

DRG NO.: **BSP989.2_13**
 SCALE: **1:20 @ A3**
 DATE: **JAN 2020**
 DRAWN: **TBW/APO**
 CHECKED: **GMI/APO**

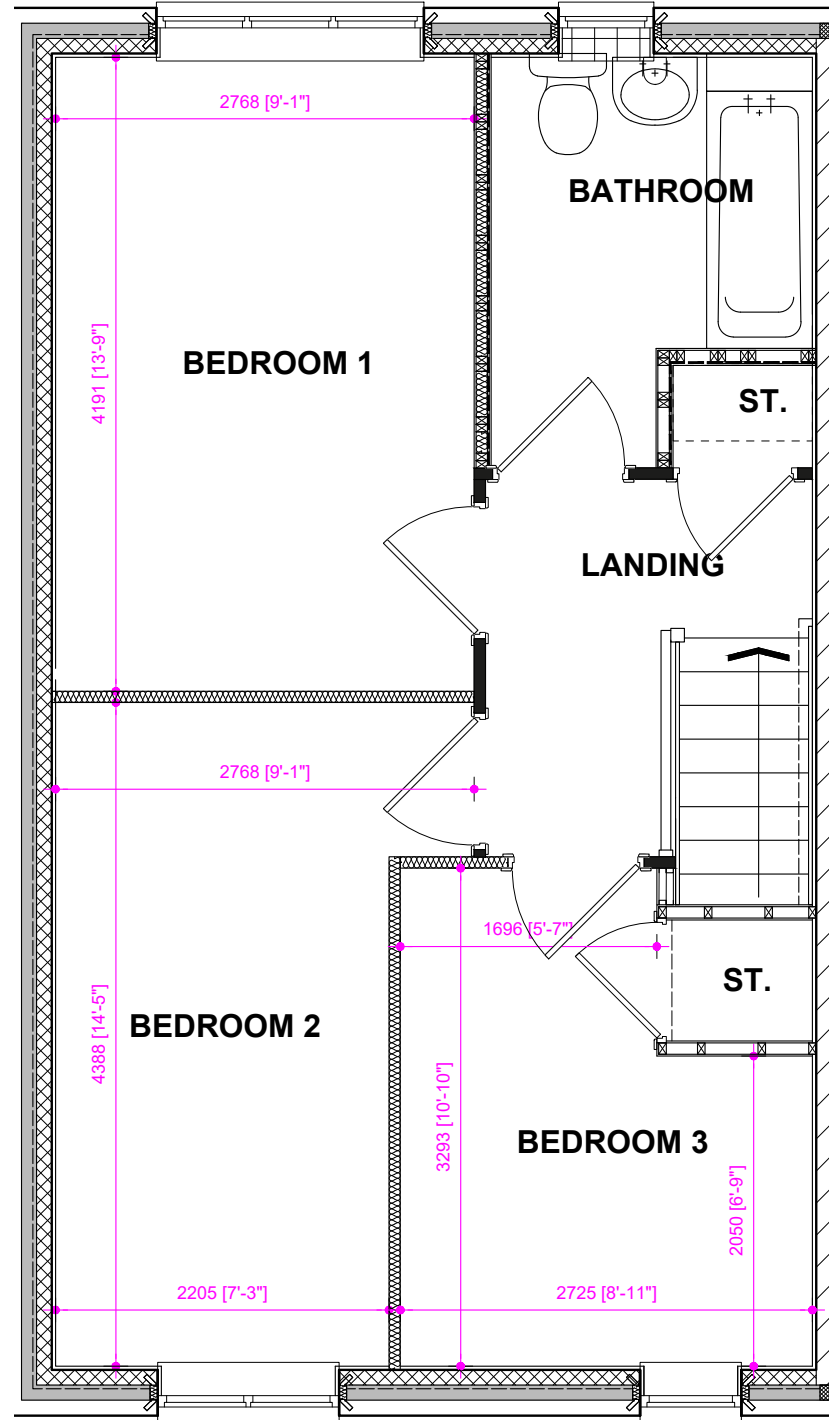


REV: **4.4** AUG 2022

DRAWING UPDATED IN LINE WITH LATEST ISSUE 4.4 NSS.3B4P



GROUND FLOOR PLAN



FIRST FLOOR PLAN



REV: **4.4** AUG 2022

DRAWING UPDATED IN LINE WITH LATEST ISSUE 4.4 NSS.3B4P

DRG NO.: **BSP989.2_14**
 SCALE: **N.T.S @ A3**
 DATE: **JAN 2020**
 DRAWN: **TBW/APO**
 CHECKED: **GMA/PO**

NAME: **SAWHNEY**
 DRAWING: **ROOM SIZE LAYOUT**
 SPECIFICATION LEVEL: **BASE**

