

Client: BLOOR SWINDON/SOUTH WEST
 Site: SHRIVENHAM PHASE B AFFORDABLE
 House Type: SUTHERLAND EXCL UTILITY
 House Type 2: 3B5P RENTED

Drawing No: 653570_
 Revision No:
 Scale: Scale-to-fit



**SCHEDULE &
CUBIC CAPACITY**

Symphony®

| | | | |
|--------------|--|----------------|----------------------------------|
| Client Name: | BLOOR SWINDON/SOUTH WEST | Site Name: | SHRIVENHAM PHASE B AFFORDABLE |
| House Type: | SUTHERLAND EXCL UTILITY 3B5P RENTED | | |
| Drawing No: | 653570__ | Revision No: | |
| Date Drawn: | Fri, Jul 8, 2022 | Revision Date: | |
| Designed By: | SOMMER AL-KHAIAT | Quote No: | |

Items on Plan: Default Style

| Plan No. | Qty | Code | Hdg | Description | Dims | CC (M3) |
|----------|-----|----------|-----|--|--------------|---------|
| 1 | 1 | BBU6592C | | Carcase Matched Base Blender | 650/920 | |
| 2 | 1 | BU66F | L | Base Unit FH | 600/600/870 | 0.20 |
| 3 | 1 | BU56F | L | Base Unit FH | 500/600/870 | 0.16 |
| 4 | 1 | DU66D | | Drawer Unit | 600/600/870 | 0.19 |
| 5 | 1 | TSP3X6P | | Tray Space | 300/600 | 0.03 |
| 6 | 1 | CB126FBO | L | Corner Base FH, No C/Post (600 Door) | 1200/600/870 | 0.41 |
| 7 | 1 | BU56F | R | Base Unit FH | 500/600/870 | 0.16 |
| 8 | 1 | BU56F | R | Base Unit FH | 500/600/870 | 0.16 |
| 9 | 1 | BR6623 | R | Broom Unit | 600/600/2276 | 0.63 |
| 10 | 1 | WU690LK | L | Lockable Wall Unit | 600/300/900 | 0.13 |
| 11 | 1 | WU4590 | L | Wall Unit | 450/300/900 | 0.09 |
| 12 | 1 | WU490 | R | Wall Unit | 400/300/900 | 0.08 |
| 13 | 1 | WU4590 | R | Wall Unit | 450/300/900 | 0.09 |
| | 1 | BWU390C | | Carcase Matched Wall Blender (For Filler) | 307/970 | |

**Total cubic metres of
storage 2.33**

Worktop Details: Default Style

| Plan No. | Qty | Code | Description | Dims |
|----------|-----|------|------------------|----------|
| 14 | 1 | PF40 | 40mm P/F Worktop | 2600/600 |
| 15 | 1 | PF40 | 40mm P/F Worktop | 640/600 |
| 16 | 1 | PF40 | 40mm P/F Worktop | 1010/600 |

Accessories and Trims: Default Style

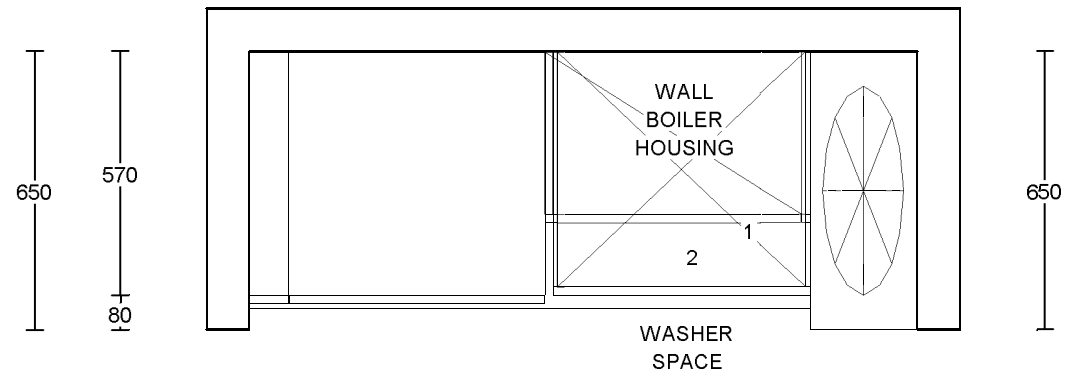
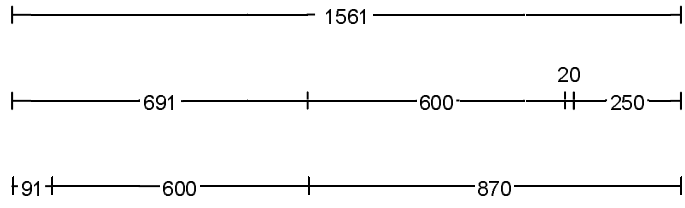
| Qty | Code | Description | Dims |
|-----|--------------|---|----------|
| 2 | BRKPLINTH | Plinth Corner Bracket (Pack of 2) | |
| 3 | CONPLINTHC | Carcase Matched Continuous Plinth w/Plinth Seal | 2800 |
| 1 | ECOBIN4 | Triple Ecobin | 400 |
| 2 | RUNITPROTECT | Kitchen Protective Material | |
| 1 | STRIPALP4010 | Alum. P/F Strip (10) | 40/665mm |
| 3 | STRIPALS4010 | Alum. P/F End Cap (10) | 40/650 |

2

WTOPPROTECT

Corrugated Worktop
Protection

2400/1200



PLEASE CHECK ALL
DIMENSIONS PRIOR TO
ORDERING

| | | | | |
|---|-------------------------------|---|--------------|------------------------------|
| Client: | BLOOR SWINDON/SOUTH WEST | Drawing No: | 653570U_ | Symphony [®] |
| Site: | SHRIVENHAM PHASE B AFFORDABLE | Revision No: | | |
| House Type: | SUTHERLAND UTILITY | Scale: | Scale-to-fit | |
| House Type 2: | 3B5P RENTED | | | |
| <small>THIS DRAWING AND THE COPYRIGHT THEREIN IS THE PROPERTY OF THE SYMPHONY GROUP PLC. THIS DRAWING IS ISSUED ON THE CONDITION THAT IT MUST NOT BE USED, COPIED OR EXHIBITED WITHOUT THE WRITTEN PERMISSION OF THE SYMPHONY GROUP PLC. ANY COMPONENTS OR ARTICLES MADE IN ACCORDANCE WITH THIS DRAWING MUST NOT BE USED FOR ANY OTHER PURPOSE THAN FOR WHICH THE DRAWING IS ISSUED.</small> | | <small>THIS PLAN IS OFFERED AS A GUIDE ONLY FOR APPROVAL BY OUR CUSTOMER. NO RESPONSIBILITY IS UNDERTAKEN FOR ITS ACCURACY IN RELATION TO ORDERS PLACED FOR THE FITTING OF OUR GOODS WITHIN THE DIMENSIONS SHOWN.</small> | | |

**SCHEDULE &
CUBIC CAPACITY**



| | | | |
|--------------|-----------------------------------|----------------|----------------------------------|
| Client Name: | BLOOR SWINDON/SOUTH WEST | Site Name: | SHRIVENHAM PHASE B AFFORDABLE |
| House Type: | SUTHERLAND UTILITY 3B5P RENTED | | |
| Drawing No: | 653570U_ | Revision No: | |
| Date Drawn: | Fri, Jul 8, 2022 | Revision Date: | |
| Designed By: | SOMMER AL-KHAIAT | Quote No: | |

Items on Plan: Default Style

| Plan No. | Qty | Code | Hdg | Description | Dims | CC (M3) |
|--------------------------------------|-----|---------|-----|---|-------------|-------------|
| 1 | 1 | BU66F | L | Base Unit FH | 600/600/870 | 0.20 |
| 3 | 1 | BH690 | R | Boiler Housing | 600/400/900 | |
| | 1 | BSP390P | | Base/Wall Unit Spacer Panel (For Filler) | 300/900 | |
| Total cubic metres of storage | | | | | | 0.20 |

Worktop Details: Default Style

| Plan No. | Qty | Code | Description | Dims |
|----------|-----|------|------------------|----------|
| 2 | 1 | PF40 | 40mm P/F Worktop | 1400/600 |

Accessories and Trims: Default Style

| Qty | Code | Description | Dims |
|-----|--------------|--|-----------|
| 1 | BRKPLINTH | Plinth Corner Bracket (Pack of 2) | |
| 1 | BSP372P | Base/Wall Unit Spacer Panel (For Filler) | 300/724 |
| 1 | CONPLINTHC | Carcase Matched Continuous Plinth w/Plinth Seal | 2600 |
| 1 | RUNITPROTECT | Kitchen Protective Material | |
| 1 | WTOPPROTECT | Corrugated Worktop Protection | 2400/1200 |