

Client: BLOOR SWINDON/SOUTH WEST
 Site: SHRIVENHAM PHASE B AFFORDABLE
 House Type: SUTHERLAND EXCL UTILITY
 House Type 2: 3B5P SHARED

Drawing No: 653579_
 Revision No:
 Scale: Scale-to-fit

Symphony[®]

THIS DRAWING AND THE COPYRIGHT THEREIN IS THE PROPERTY OF THE SYMPHONY GROUP PLC. THIS DRAWING IS ISSUED ON THE CONDITION THAT IT MUST NOT BE USED, COPIED OR EXHIBITED WITHOUT THE WRITTEN PERMISSION OF THE SYMPHONY GROUP PLC. ANY COMPONENTS OR ARTICLES MADE IN ACCORDANCE WITH THIS DRAWING MUST NOT BE USED FOR ANY OTHER PURPOSE THAN FOR WHICH THE DRAWING IS ISSUED.

THIS PLAN IS OFFERED AS A GUIDE ONLY FOR APPROVAL BY OUR CUSTOMER. NO RESPONSIBILITY IS UNDERTAKEN FOR ITS ACCURACY IN RELATION TO ORDERS PLACED FOR THE FITTING OF OUR GOODS WITHIN THE DIMENSIONS SHOWN.

**SCHEDULE &
CUBIC CAPACITY**

Symphony®

Client Name:	BLOOR SWINDON/SOUTH WEST	Site Name:	SHRIVENHAM PHASE B AFFORDABLE
House Type:	SUTHERLAND EXCL UTILITY 3B5P SHARED		
Drawing No:	653579__	Revision No:	
Date Drawn:	Fri, Jul 8, 2022	Revision Date:	
Designed By:	SOMMER AL-KHAIAT	Quote No:	

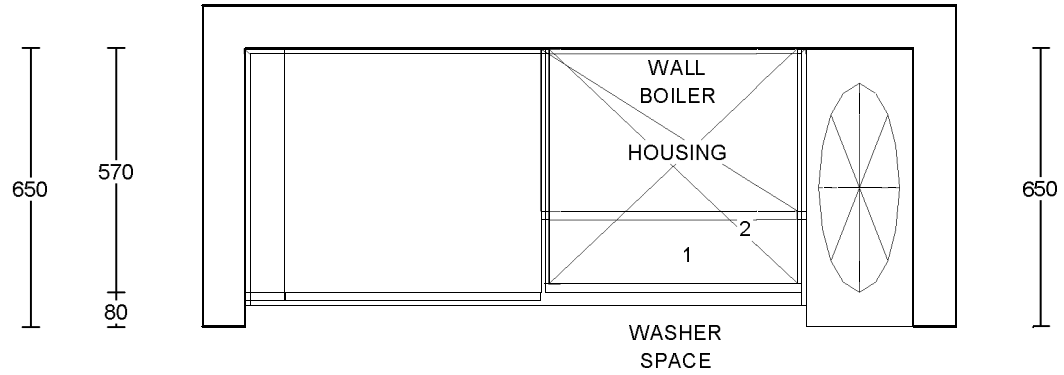
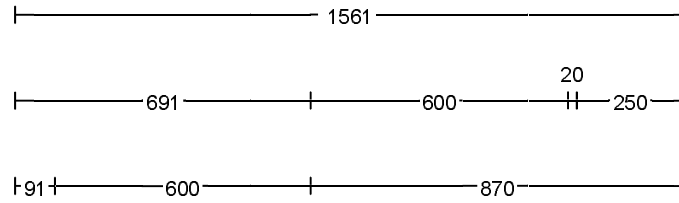
Items on Plan:		Default Style				
Plan No.	Qty	Code	Hdg	Description	Dims	CC (M3)
1	1	BBU6592C		Carcase Matched Base Blender	650/920	
2	1	BU66F	L	Base Unit FH	600/600/870	0.20
3	1	BU66F	L	Base Unit FH	600/600/870	0.20
4	1	DU56D		Drawer Unit	500/600/870	0.16
5	1	TSP3X6P		Tray Space	300/600	0.03
6	1	CB126FBO	L	Corner Base FH, No C/Post (600 Door)	1200/600/870	0.41
7	1	BOH66A		Built Under Housing	600/600/870	
8	1	BU56F	R	Base Unit FH	500/600/870	0.16
9	1	BU56F	R	Base Unit FH	500/600/870	0.16
10	1	BR6623	R	Broom Unit	600/600/2276	0.63
11	1	WU690LK	L	Lockable Wall Unit	600/300/900	0.13
12	1	WU4590	L	Wall Unit	450/300/900	0.09
13	1	WU490	R	Wall Unit	400/300/900	0.08
14	1	WU4590	R	Wall Unit	450/300/900	0.09
	1	BWU390C		Carcase Matched Wall Blender (For Filler)	307/970	

Total cubic metres of storage 2.34

Worktop Details:		Default Style		
Plan No.	Qty	Code	Description	Dims
15	1	PF40	40mm P/F Worktop	2600/600
16	1	PF40	40mm P/F Worktop	2400/600
	1	PFUP3095	Laminate Upstand	3000/95
	1	PFUP3095	Laminate Upstand	3000/95

Accessories and Trims:		Default Style		
Qty	Code	Description	Dims	
1	BRKPLINTH	Plinth Corner Bracket (Pack of 2)		
2	CONPLINTHC	Carcase Matched Continuous Plinth w/Plinth Seal	2800	
1	ECOBIN4	Triple Ecobin	400	
2	RUNITPROTECT	Kitchen Protective Material		

1	SBACK675	Stainless Steel Splashback	600/750
1	STRIPALS4010	Alum. P/F End Cap (10)	40/650
1	TOPSEALBOLT	Topseal Easibolt Pack	
1	WTOPPROTECT	Corrugated Worktop Protection	2400/1200



PLEASE CHECK ALL
DIMENSIONS PRIOR TO
ORDERING

Client: BLOOR SWINDON/SOUTH WEST
Site: SHRIVENHAM PHASE B AFFORDABLE
House Type: SUTHERLAND UTILITY
House Type 2: 3B5P SHARED

Drawing No: 653579U_
Revision No:
Scale: Scale-to-fit

Symphony®

THIS DRAWING AND THE COPYRIGHT THEREIN IS THE PROPERTY OF THE SYMPHONY GROUP PLC. THIS DRAWING IS ISSUED ON THE CONDITION THAT IT MUST NOT BE USED, COPIED OR EXHIBITED WITHOUT THE WRITTEN PERMISSION OF THE SYMPHONY GROUP PLC. ANY COMPONENTS OR ARTICLES MADE IN ACCORDANCE WITH THIS DRAWING MUST NOT BE USED FOR ANY OTHER PURPOSE THAN FOR WHICH THE DRAWING IS ISSUED.

THIS PLAN IS OFFERED AS A GUIDE ONLY FOR APPROVAL BY OUR CUSTOMER. NO RESPONSIBILITY IS UNDERTAKEN FOR ITS ACCURACY IN RELATION TO ORDERS PLACED FOR THE FITTING OF OUR GOODS WITHIN THE DIMENSIONS SHOWN.

**SCHEDULE &
CUBIC CAPACITY**



Client Name:	BLOOR SWINDON/SOUTH WEST	Site Name:	SHRIVENHAM PHASE B AFFORDABLE
House Type:	SUTHERLAND UTILITY 3B5P SHARED		
Drawing No:	653579U_	Revision No:	
Date Drawn:	Fri, Jul 8, 2022	Revision Date:	
Designed By:	SOMMER AL-KHAIAT	Quote No:	

Items on Plan: Default Style

Plan No.	Qty	Code	Hdg	Description	Dims	CC (M3)
2	1	BU66F	L	Base Unit FH	600/600/870	0.20
3	1	BH690	R	Boiler Housing	600/400/900	
	1	BSP390P		Base/Wall Unit Spacer Panel (For Filler)	300/900	
Total cubic metres of storage						0.20

Worktop Details: Default Style

Plan No.	Qty	Code	Description	Dims
1	1	PF40MR	40mm Moisture Resistant P/F Worktop	1400/600
	1	PFUP3095	Laminate Upstand	3000/95

Accessories and Trims: Default Style

Qty	Code	Description	Dims
1	BRKPLINTH	Plinth Corner Bracket (Pack of 2)	
1	BSP372P	Base/Wall Unit Spacer Panel (For Filler)	300/724
1	CONPLINTHC	Carcase Matched Continuous Plinth w/Plinth Seal	2600
1	RUNITPROTECT	Kitchen Protective Material	
1	WTOPPROTECT	Corrugated Worktop Protection	2400/1200