

Client: BLOOR HOMES

Site: FARINGDON, PARK ROAD, HA

House Type: CLASSIC 3B5P SORLEY - EXC UTILITY

House Type 2: SHARED

Drawing No: 527700\_B

Revision No: B

Scale: Scale-to-fit

Symphony®

**SCHEDULE &  
CUBIC CAPACITY**

**Symphony**<sup>®</sup>

|              |   |                |                             |
|--------------|---|----------------|-----------------------------|
| Client Name: | BLOOR HOMES                                 | Site Name:     | FARINGDON, PARK ROAD,<br>HA |
| House Type:  | CLASSIC 3B5P SORLEY - EXC UTILITY<br>SHARED |                |                             |
| Drawing No:  | 527700_B                                    | Revision No:   | B                           |
| Date Drawn:  | Fri, Oct 15, 2021                           | Revision Date: | 15.10.21                    |
| Designed By: | JOSHUA GOODISON                             | Quote No:      |                             |

Items on Plan: Default Style

| Plan No. | Qty | Code    | Hdg | Description                                  | Dims         | CC (M3) |
|----------|-----|---------|-----|--|--------------|---------|
| 1        | 1   | BR6623  | L   | Broom Unit                                   | 600/600/2276 | 0.63    |
| 2        | 1   | BU56F   | L   | Base Unit FH                                 | 500/600/870  | 0.16    |
| 3        | 1   | BU56F   | L   | Base Unit FH                                 | 500/600/870  | 0.16    |
| 4        | 1   | BOH66A  |     | Built Under Housing                          | 600/600/870  |         |
| 5        | 1   | CB126F  | R   | Corner Base FH (600 Door)                    | 1200/600/870 | 0.41    |
| 6        | 1   | DU66D   |     | Drawer Unit                                  | 600/600/870  | 0.19    |
| 7        | 1   | BU66F   | L   | Base Unit FH                                 | 600/600/870  | 0.20    |
| 8        | 1   | BU66F   | R   | Base Unit FH                                 | 600/600/870  | 0.20    |
| 9        | 1   | WU4590  | L   | Wall Unit                                    | 450/300/900  | 0.09    |
| 10       | 1   | WU490   | L   | Wall Unit                                    | 400/300/900  | 0.08    |
| 11       | 1   | WU4590  | R   | Wall Unit                                    | 450/300/900  | 0.09    |
| 12       | 1   | WU690   | R   | Wall Unit                                    | 600/300/900  | 0.13    |
|          | 1   | BWU390C |     | Carcase Matched Wall Blender<br>(For Filler) | 307/970      |         |

**Total cubic metres of storage**

**2.34**

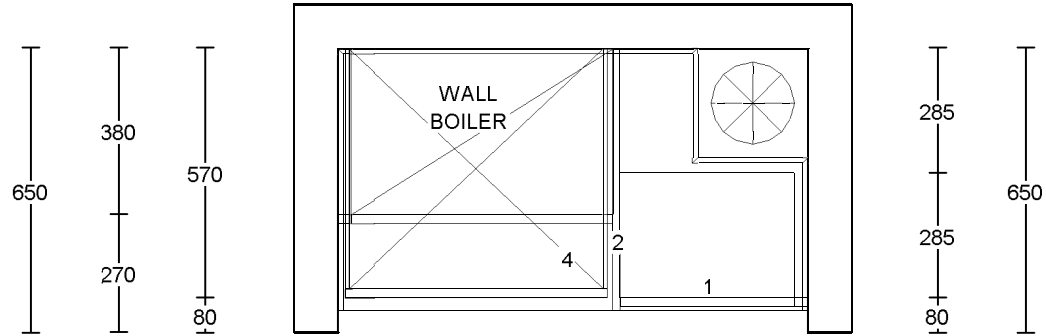
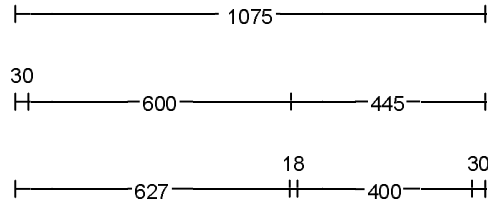
Worktop Details: Default Style

| Plan No. | Qty | Code     | Description      | Dims     |
|----------|-----|----------|------------------|----------|
| 13       | 1   | PF40     | 40mm P/F Worktop | 2400/600 |
| 14       | 1   | PF40     | 40mm P/F Worktop | 2600/600 |
|          | 1   | PFUP3095 | Laminate Upstand | 3000/95  |
|          | 1   | PFUP3095 | Laminate Upstand | 3000/95  |

Accessories and Trims: Default Style

| Qty | Code         | Description                                     | Dims    |
|-----|--------------|---|---------|
| 1   | BRKPLINTH    | Plinth Corner Bracket (Pack of 2)               |         |
| 3   | CONPLINTHC   | Carcase Matched Continuous Plinth w/Plinth Seal | 2600    |
| 1   | ECOBIN4      | Triple Ecobin                                   | 400     |
| 2   | RUNITPROTECT | Kitchen Protective Material                     |         |
| 1   | SBACK675     | Stainless Steel Splashback                      | 600/750 |





WASHER  
SPACE

PLEASE CHECK ALL  
DIMENSIONS PRIOR TO  
ORDERING

|               |                               |              |              |
|---------------|-------------------------------|--------------|--------------|
| Client:       | BLOOR HOMES                   | Drawing No:  | 527700UB     |
| Site:         | FARINGDON, PARK ROAD, HA      | Revision No: | B            |
| House Type:   | CLASSIC 3B5P SORLEY - UTILITY | Scale:       | Scale-to-fit |
| House Type 2: | SHARED                        |              |              |



THIS DRAWING AND THE COPYRIGHT THEREIN IS THE PROPERTY OF THE SYMPHONY GROUP PLC. THIS DRAWING IS ISSUED ON THE CONDITION THAT IT MUST NOT BE USED, COPIED OR EXHIBITED WITHOUT THE WRITTEN PERMISSION OF THE SYMPHONY GROUP PLC. ANY COMPONENTS OR ARTICLES MADE IN ACCORDANCE WITH THIS DRAWING MUST NOT BE USED FOR ANY OTHER PURPOSE THAN FOR WHICH THE DRAWING IS ISSUED.

THIS PLAN IS OFFERED AS A GUIDE ONLY FOR APPROVAL BY OUR CUSTOMER. NO RESPONSIBILITY IS UNDERTAKEN FOR ITS ACCURACY IN RELATION TO ORDERS PLACED FOR THE FITTING OF OUR GOODS WITHIN THE DIMENSIONS SHOWN.

**SCHEDULE &  
CUBIC CAPACITY****Symphony**<sup>®</sup>

Client Name: BLOOR HOMES

Site Name: FARINGDON, PARK ROAD,  
HAHouse Type: CLASSIC 3B5P SORLEY - UTILITY  
SHARED

Drawing No: 527700UB

Revision No: B

Date Drawn: Fri, Oct 15, 2021

Revision Date: 15.10.21

Designed By:

JOSHUA GOODISON

Quote No:

## Items on Plan:

## Default Style

| Plan No. | Qty | Code     | Hdg | Description                                 | Dims        | CC (M3) |
|----------|-----|----------|-----|---|-------------|---------|
| 1        | 1   | BU43F    | R   | Reduced Depth Base Unit FH                  | 400/300/870 | 0.07    |
| 2        | 1   | BBU6592C |     | Carcase Matched Base<br>Blender             | 650/920     |         |
| 3        | 1   | BH690    | L   | Boiler Housing                              | 600/400/900 |         |
|          | 1   | BSP390P  |     | Base/Wall Unit Spacer Panel<br>(For Filler) | 300/900     |         |

**Total cubic metres of storage****0.07**

## Worktop Details:

## Default Style

| Plan No. | Qty | Code     | Description      | Dims     |
|----------|-----|----------|------------------|----------|
| 4        | 1   | PF40     | 40mm P/F Worktop | 1200/600 |
|          | 1   | PFUP3095 | Laminate Upstand | 3000/95  |

## Accessories and Trims:

## Default Style

| Qty | Code         | Description  | Dims    |
|-----|--------------|--|---------|
| 1   | BSP372P      | Base/Wall Unit Spacer Panel<br>(For Filler)        | 300/724 |
| 1   | CONPLINTHC   | Carcase Matched Continuous<br>Plinth w/Plinth Seal | 2600    |
| 1   | RUNITPROTECT | Kitchen Protective Material                        |         |